

Sf. Gheorghe Square, No. 4, Ap. 10  
300 085 - Timisoara, Romania

T: 0040-256-606042 ..43  
F: 0040-256-430093

andregaivo@gmail.com  
contact@andreescu-gaivoronski.com

www.andreescu-gaivoronski.com

# ANDREESCU & GAIVORONSKI

---

P O R T F O L I O

# ANDREESCU & GAIVORONSKI

---

## The short story

ANDREESCU & GAIVORONSKI is today one of the prestigious reference points in the Romanian contemporary architecture. A series of projects and edifices obtained recognition in the last twenty five years . Among the over 50 national and international distinctions, the most important are:

The European Award for Steel Construction ECCS in 1997;

Nominated for The Mies van der Rohe European Architecture Award , Barcelona, in 2008 and 2012, Shortlisted at WAF - World Architecture Festival , Barcelona, in 2010 and Berlin in 2016;

Longlisted by the jury for WAN Awards 2011 – Public buildings sector (World Architecture News.com) and 2012 – Residential sector (World Architecture News.com).

Winner at German Design Awards 2018 and Architecture Prize at BETA – Timisoara Euro Regional Architecture Biennial 2016 with City Business Centre Timisoara and Architecture Prize at BETA – Timisoara Euro Regional Architecture Biennial 2018 with THE OFFICE Cluj.

In 2008 the Arhitekt Foundation has published the Andreescu & Gaivoronschi Monography.

Most of the our important projects have been published in architecture books, albums and magazines, both romanian and foreign, like : Arhitectura, Arhitekt, De Arhitectura, Igloo, Contemporaneu - Brazil, Project Baikal - Russia, J Tart Publishing Collection - China, Profile Architecture Magazine by Schuco; and can also be found on sites as : Archdaily, Architizer, Arhiforum, World Building Directory - World Architecture forum, Open Buildings, Top Design, etc.





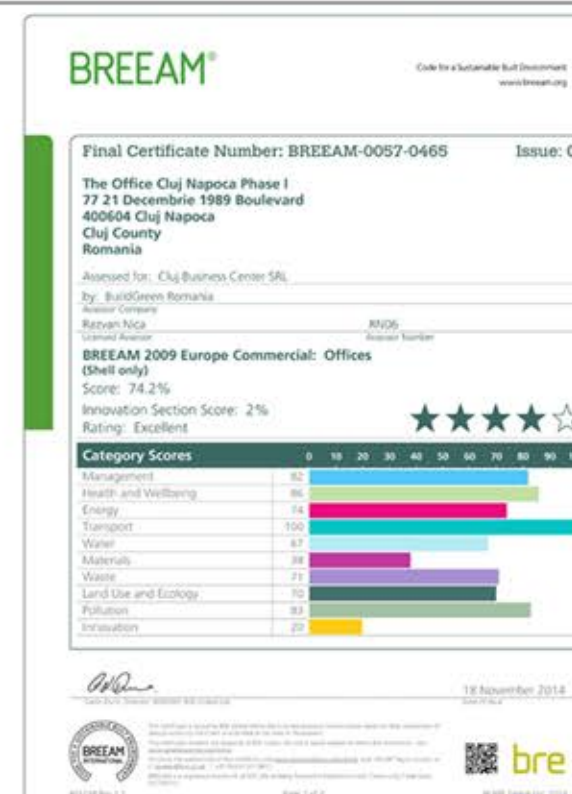
# ANDREESCU & GAIVORONSKI

## Awards, distinctions and contests

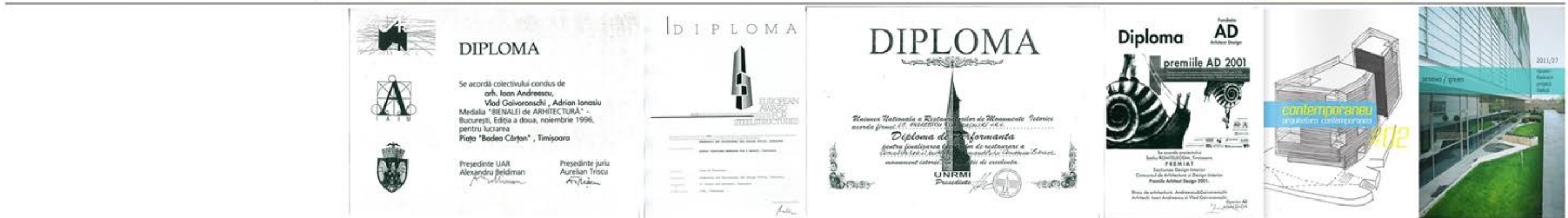
- 1981 2nd Prize at Central Glass International Architectural Design Competition Tokyo
- 1989 "Tokyo Forum" contest
- 1992 "Nara Civic Hall" contest
- 1996 "Badea Cartan Market" prize at Architecture Biennale Bucuresti
- 1997 "Badea Cartan Market" - ECCS Steel Design Award
- 2008 "City Business Centre" - Nomination for the European Union Prize for Contemporary Architecture - Mies van der Rohe Award
- 2009 "City Business Centre" - Green Building of the Year at EE REAL ESTATE AWARDS - RoGBC (Romanian Green Building Council)
- 2010 "City Business Centre" and "CFR Marfa Headquarters" shortlisted at World Architecture Festival
- 2010 "Harmonia Retirement Home" - Nomination for the European Union Prize for Contemporary Architecture - Mies van der Rohe Award
- 2010 "Sant Andres Gymnasium, Schweich, Germania" contest
- 2011 "Harmonia Retirement Home" - Winner at Fluente International Architekt Festival 2011
- 2012 "Badea Cartan Market (re)habilitation" - Excellency Prize at ATA Timisoara 2012
- 2012 Excellency Prize at BNA Bucuresti 2012
- 2016 "City Business Centre" - Premiul INGLASS Award
- 2016 "City Business Centre" - selection for 100 Architects of the year 2016
- 2016 "Home of Art" - prize at BETA biennale 2016
- 2016 "City Business Centre" - prize at BETA biennale 2016
- 2016 "City Business Centre" - shortlisted at World Architecture Festival Berlin 2017
- 2017 "The Office Cluj" - selection for 100 Architects of the year 2017
- 2018 "City Business Centre" - Winner German Design Award 2018
- 2018 "The Office Cluj" - shortlisted at BNA Bucuresti 2018
- 2018 "The Office Cluj" - prize at BETA biennale 2018

## Certificates & recognition

- TUV Austria Certificate - valid until 2021
- BREEAM Excellent Certificate for The Office Cluj in 2014
- TOP 100 Architecture Firms 2018 - 80th place









## office & team



### PAST TEAM MEMBERS:





# selected projects

OFFICE



## CITY BUSINESS CENTRE

Timisoara, Romania

- shortlisted at “Mies van der Rohe” European Union Prize
- Inglass Award 2016 prize
- shortlisted at World Architecture Festival Barcelona 2010 si Berlin 2016
- German Design Award 2018



## INCUBOXX

Timisoara, Romania

- selection at “100 Architects of the Year 2016” Korea exhibition
- selection at Bienala Nationala de Arhitectura Bucuresti 2012



## THE OFFICE CLUJ

Cluj-Napoca, Romania

- shortlisted at Anuala Timisoreană de Arhitectură 2012
- selection at “100 Architects of the Year 2017” Korea exhibition
- BETA 2018 prize
- shortlisted at BNA Bucuresti 2018
- certificate of excellence RBA 2017



## SEDIU CFR MARFA

Timisoara, Romania

- shortlisted at World Architecture Festival Barcelona 2010

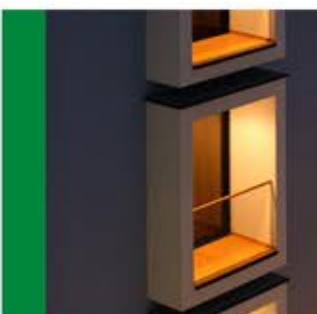
HOTELS



## SAVOY HOTEL

Timisoara, Romania

- shortlisted at Bienala de Arhitectura Bucuresti in 2006



## REGHINA BLUE HOTEL

Timisoara, Romania

- shortlisted at Arhitext Design Prize 2005



## HOME OF ART

Timisoara, Romania

- prize at BETA Biennale 2016



## HOUSE WITH COLORED LIGHTS

Timisoara, Romania

- excellency prize for residential architecture at Anuala de Arhitectura 2013



## AB HOUSE

Timisoara, Romania

- shortlisted at Bienala Nationala de Arhitectura Bucuresti 2014



## HARMONIA RETIREMENT HOUSE

Timisoara, Romania

- shortlisted for “Mies van der Rohe” European Union Prize
- shortlisted at BNA Bucuresti 2010
- shortlisted at ATA Timisoara 2010
- Baunit National Prize in 2011
- winner at Arhitext International Festival 2011



## GALERIA 1

Timisoara, Romania

## BADEA CARTAN MARKET

Timisoara, Romania

- ECCS Steel Design Award– 1997
- prize BNA Bucuresti – 1996

## ISHO MIXED USE RESIDENTIAL - OFFICE- HOTEL

Timisoara, Romania

- ongoing project to be completed in 2020





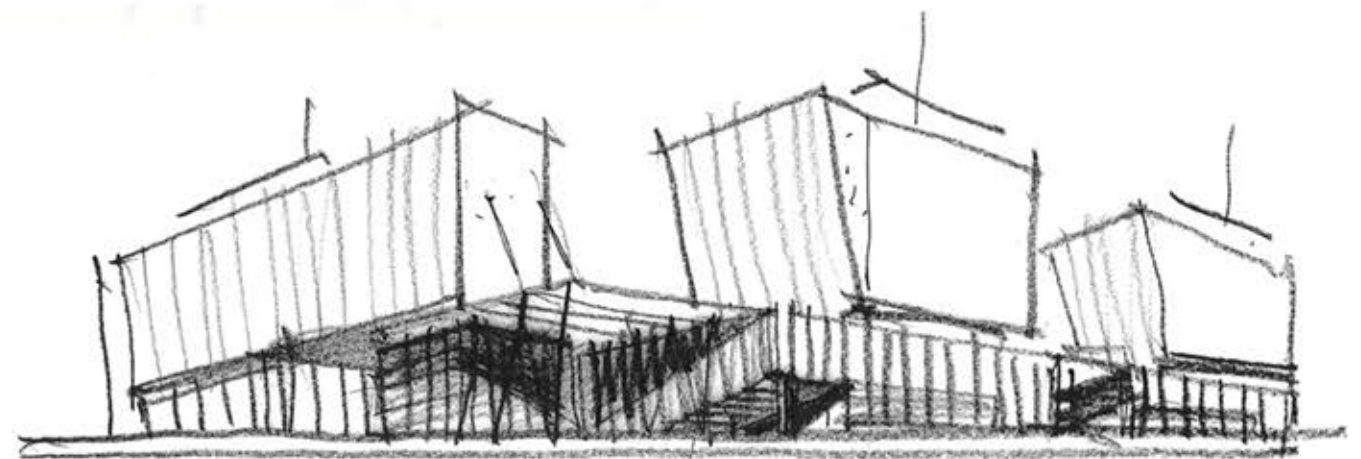
# CITY BUSINESS CENTRE

Timisoara, Romania

---

Architect:	Year:	Collaborators:
<b>Vlad Gaivoronschi</b> <b>Dan Munteanu</b>	<b>2016</b>	<b>Szabo Katalin, Dan Damian,</b> <b>Alexandru Mălăescu, Iulia Frăţilă</b>

On the XVIII century historical city west side an urban regeneration project, City Business Centre with it's five buildings, was finalised in late 2016. It replaced several buildings belonging to a textile industry. Instead a brown field, the development offers public galleries and plaza, semipublic spaces, halls, foyers, conference centre, commerce and, at uper levels, class A offices.









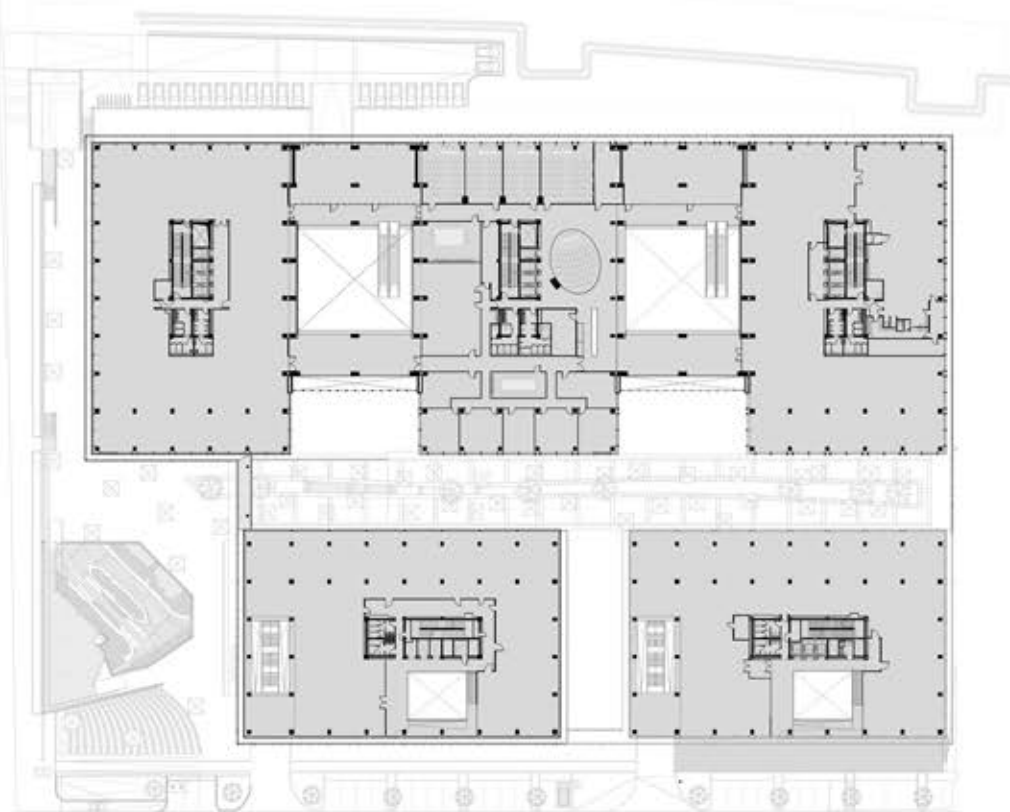
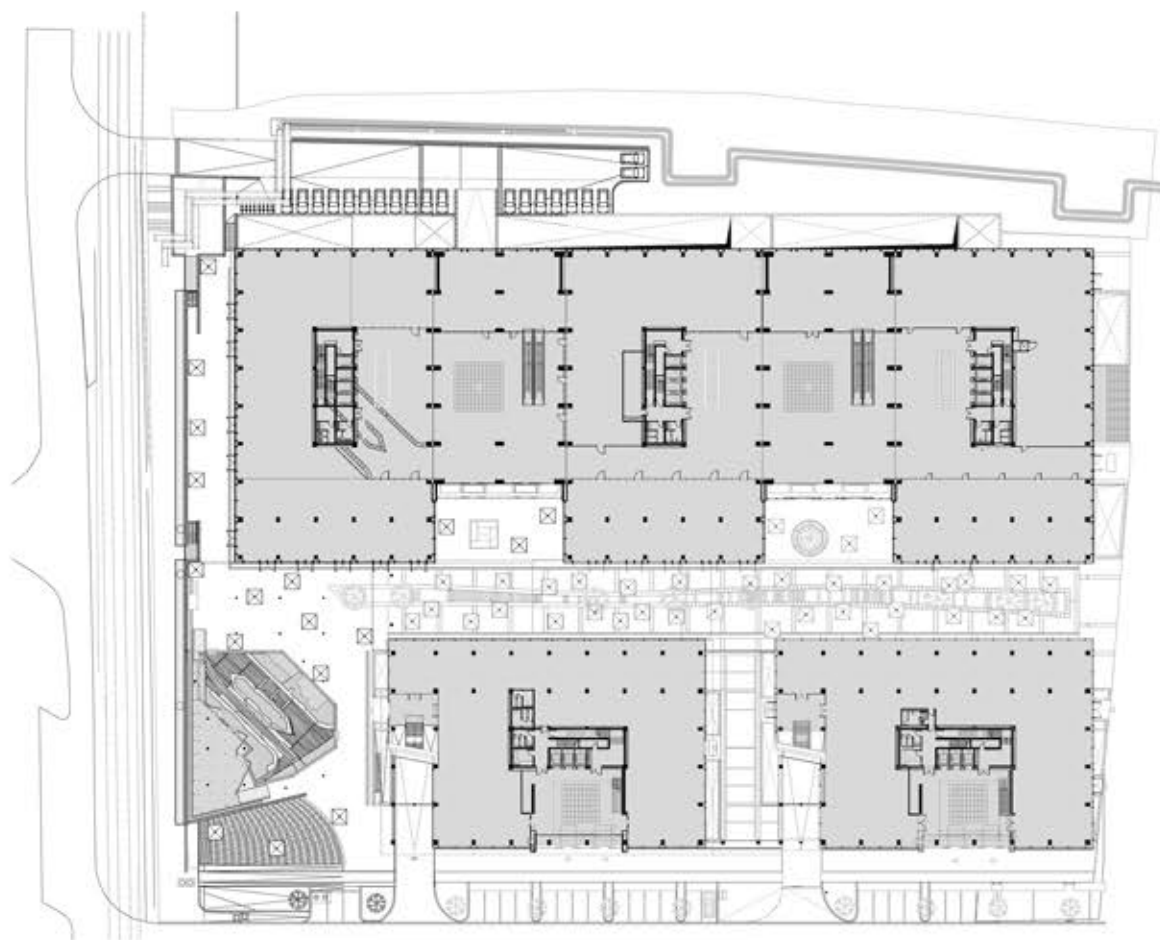
# description

In 2010 were finished the first two buildings and after the other three completed the ensemble in a compact pattern together with urban gallery and plaza. This ensemble, as a excavated massive, with common elements for all buildings (like the juxtapose of green soils – layers superimposed, system of loggias with ceramic louvers which rhymes the whole ensemble and completes the unifying, dominant element – the mezzanine level). The whole massive in glass and ceramics is a replica of the XVIII century Military Hospital situated in the east, establishing with it an important relation for a future regeneration of the area.

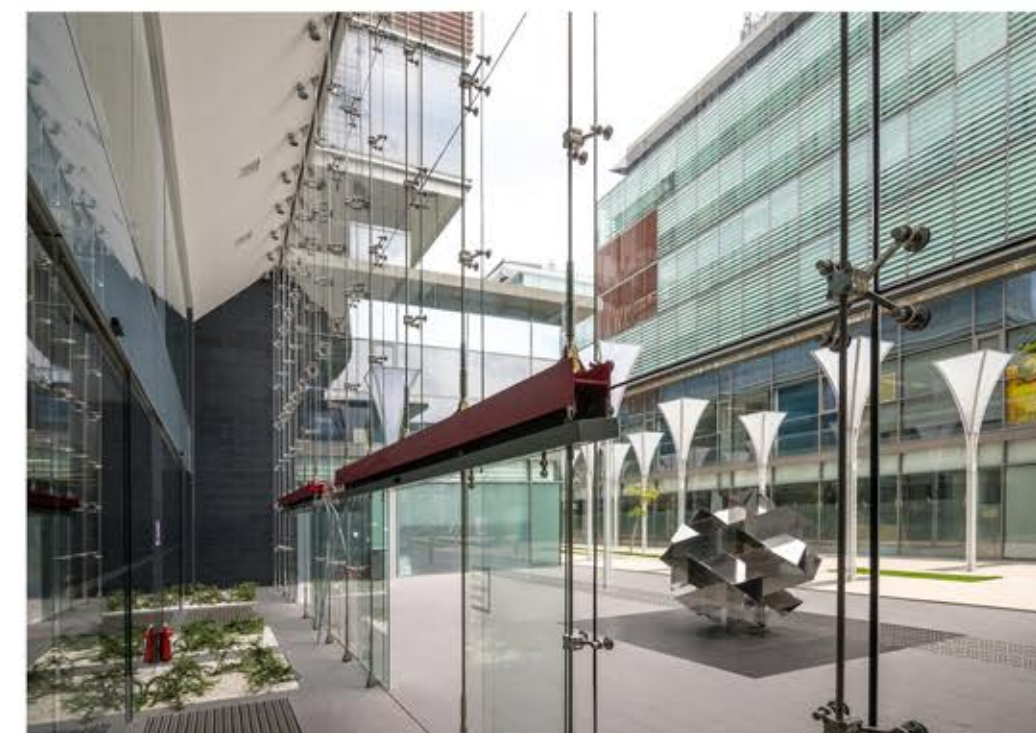
To the south emerged an “urban plaza”- type of public space, this one being located within the site boundaries. Considering the existing level difference, this space became a generous amphitheater. Although the initial project featured an emblematic work of art in this location and only a smaller surface was dedicated to archaeological artifacts, an archaeological surprise offered a whole new perspective and purpose for this particular space.



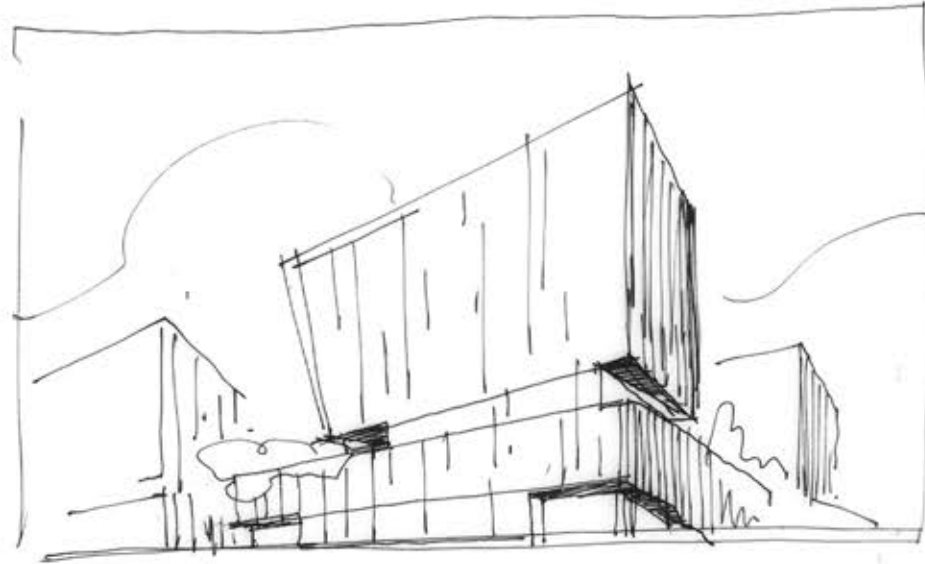




■ GROUND FLOOR PLAN ■ MEZANINE PLAN







## open air museum

On the site of this project, following foundation works, a number of artefacts emerged, defence walls including a XVIII century sluice used in the defence system around the bastion.

The entire weir with all fortifications nearby, approx. 400 sq. m. was proposed to be moved and exposed on the urban plaza offered by the project strategy. An exterior exhibition was born to be perceived from different levels by the visitor, which is illuminated at night and at the same time present information about the old city wall and its features through exterior exhibition panels. This particular example of an environmental control device is the proper symbol for a technological innovative city. It generates a fragment of an open air museum, but also it enhances the whole atmosphere of the pedestrian gallery and plaza, a surprise with all the artefacts, with the controlled layer of water and the little exhibition dedicated to it and to the Timisoara's modern history.

### ■ CROSS SECTIONS





# INCUBOXX

Timisoara, Romania

---

Architect:

**Ioan Andreescu  
Dan Munteanu**

Year:

**2014**

Collaborators:

**Dan Damian, Katalin Szabo, Paul  
Carabaş, Ligia Stafie, Iulia Frăţilă,  
Alex Mălăescu, Mihai Ungur**

The IT&C business incubator will be part of a territorial network of similar equipments and will serve as an urban landmark within a wider project that aims to change the use of an old industrial site. INCUBOXX is a cost-effective building due to two main aspects: it was cheaper to build and it has lower running costs than other office buildings in Timisoara.



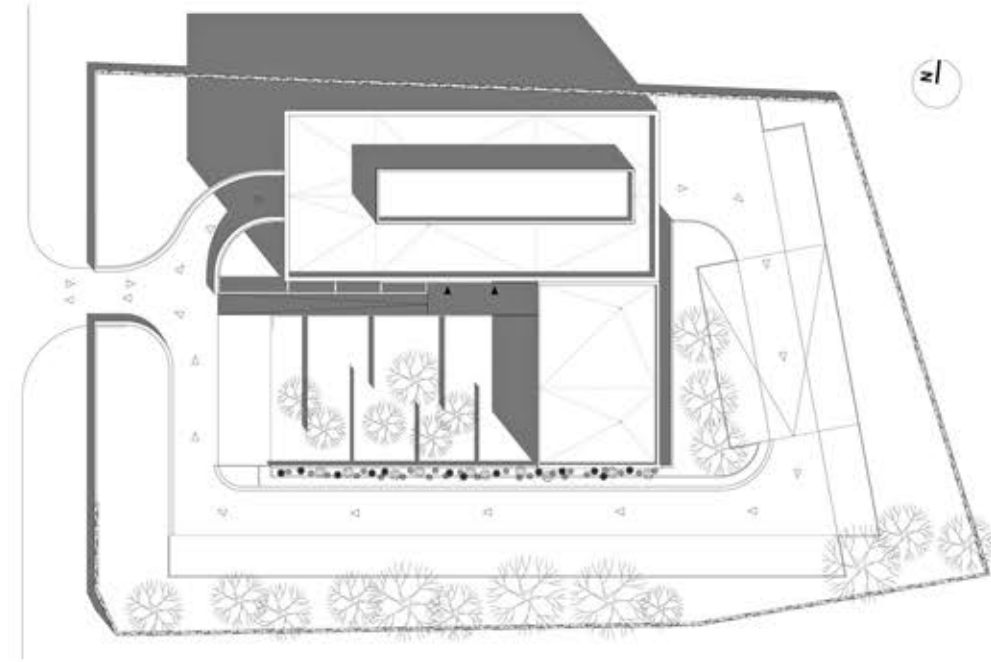




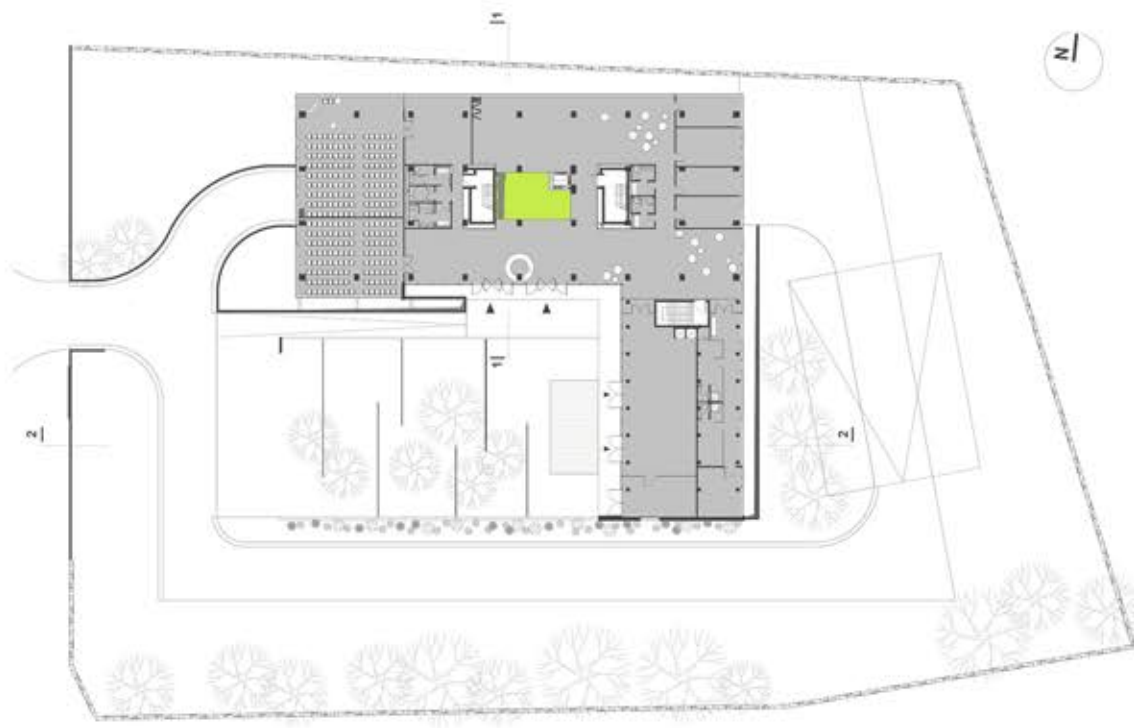


# description

INCUBOXX is a council building meant for young graduates who want to start a business within the IT&C sector. For this reason, the building is equipped to serve firms in two business stages: the incubation stage (3 years) and the consolidation-development stage (2 years). Exhibition spaces, conference rooms, a cafeteria, a gym, a climbing wall and a terrace are all at any young business man's disposal at INCUBOXX. As a result, the colour and material selection for the design is inspired by two main concepts: youth and sustainability. Located on a problematic site, between the slope of a train track and a busy boulevard crossing a derelict industrial area, the building's purpose is to improve the land it sits on both visually and functionally while containing its activity within a medium-sized volume (21070 cubic meters).



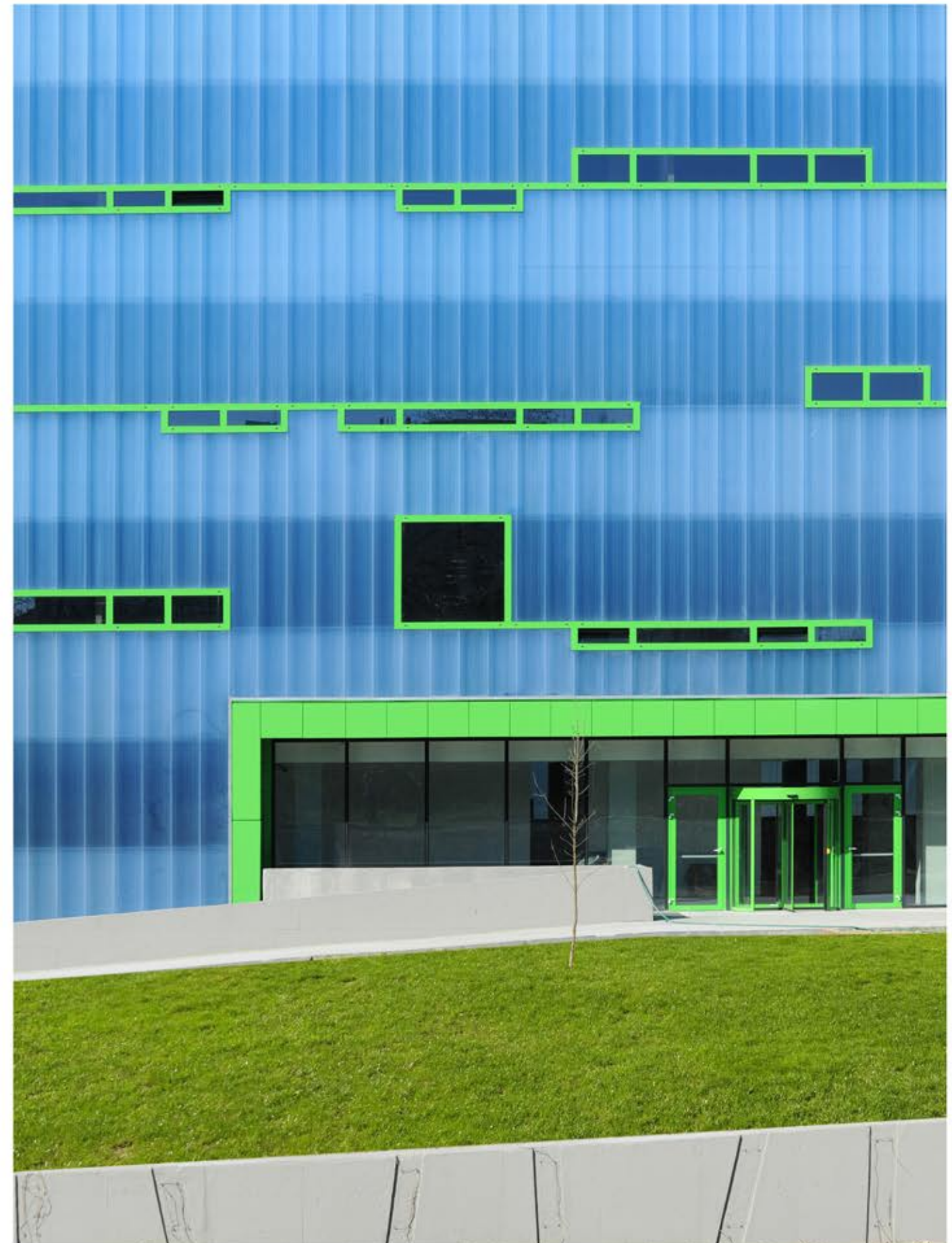




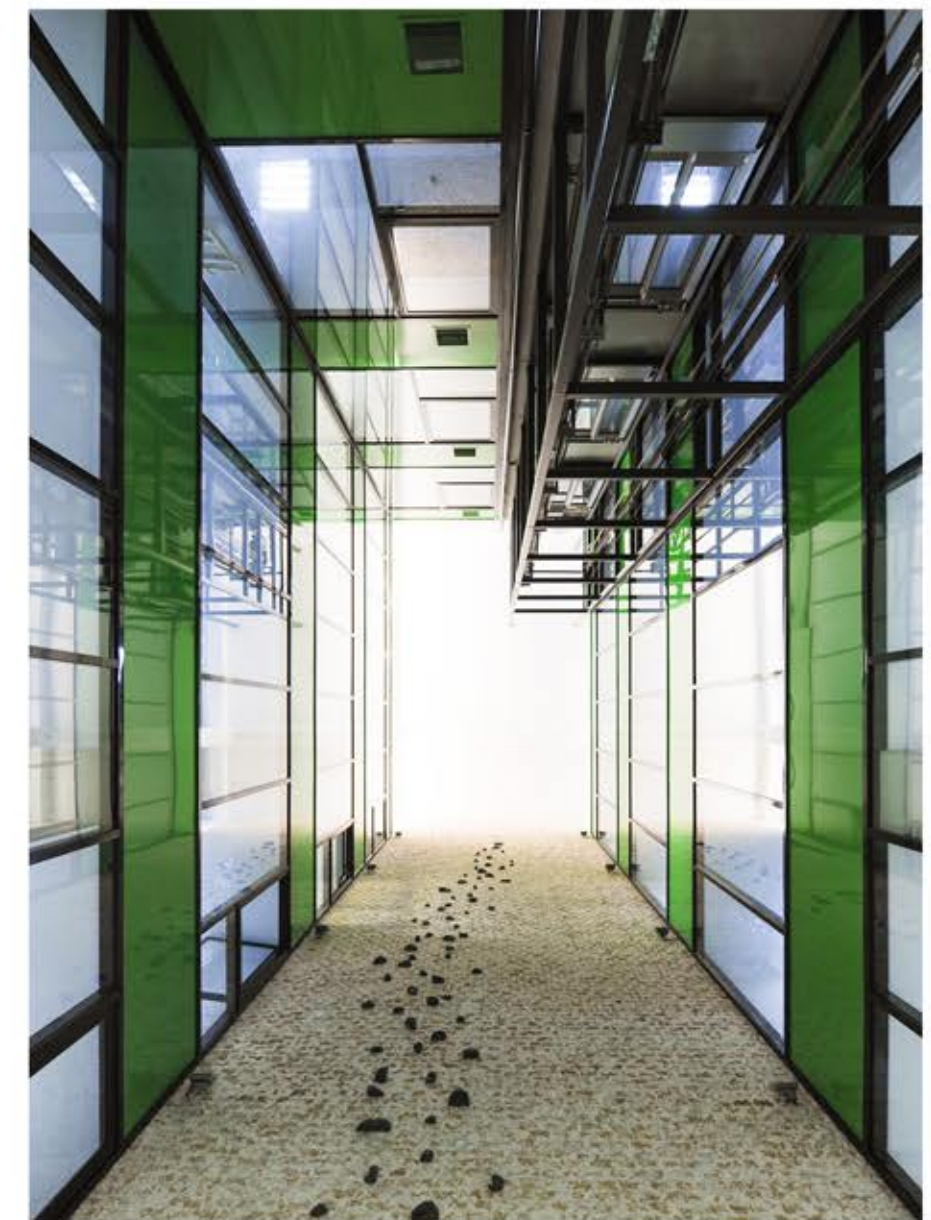
## design principles

The design follows landscaping principles: the artificially folded land integrates the slope of the train track and rises the ground floor. The main office building's west facade faces the boulevard, offering a colourful background for urban activity. The blue translucent skin, which changes its colour during the day and glows during the night is made from polycarbonate. Reminding of a circuit board, it is mounted on the horizontal structural grid which expresses itself through the horizontality of the windows. From the inside, these windows frame views of the city at eye level.

To enter INCUBOXX one must go up a gradual slope towards a lower transparent volume which contains auxiliary functions such as the cafeteria and the gym. From this level the parking spaces and service rooms become visible through the cracks and folds of the land below. The ascent continues throughout the building. From the informal entrance one is greeted by the multi-storey atrium which brings fresh air and light inside. One can literally climb up the light shaft on the climbing wall and arrive on the top of the building where the terrace is and where the cityscape unfolds.









# THE OFFICE CLUJ

Cluj-Napoca, Romania

Architect:

**Vlad Gaivoronschi**

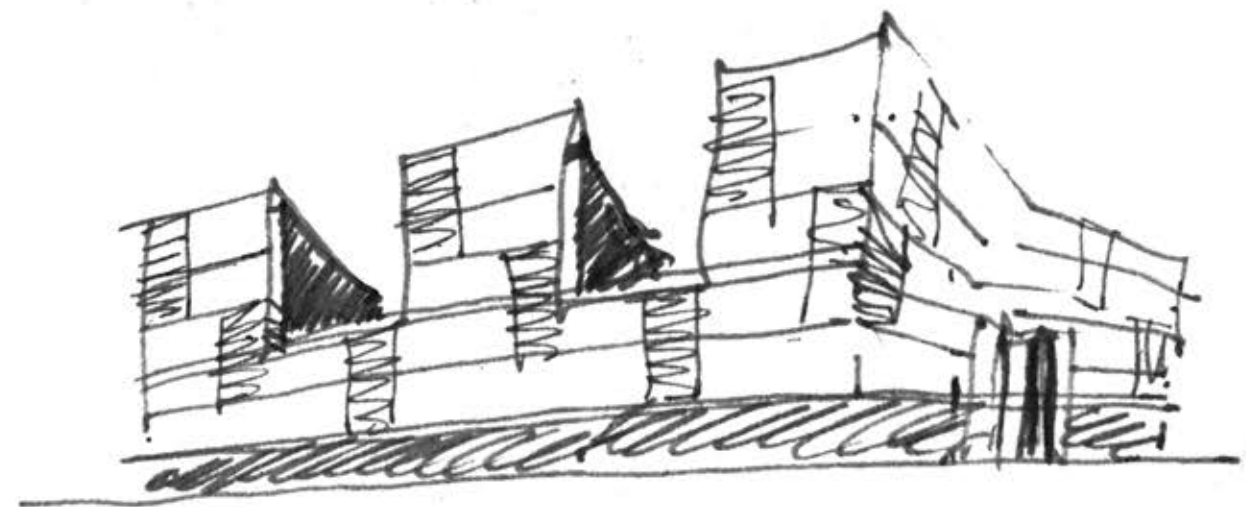
Year:

**2017**

Collaborators:

**Dan Munteanu, Szabo Katalin,  
Dan Damian, Mihai Ungur, Alina  
Georgescu, Bogdan Raț, Cătălin  
Gavrilescu**

The Office Cluj, a “city within the city” office building ensemble recently finalized, has begun as an urban regeneration project for the brownfield plot left by the old textile industry “Someșul”, in the vicinity of Cluj-Napoca’s historic centre. As in most communist cities, this area became part of the industrial framework of Cluj-Napoca, which even now includes some leftover industries and factories.







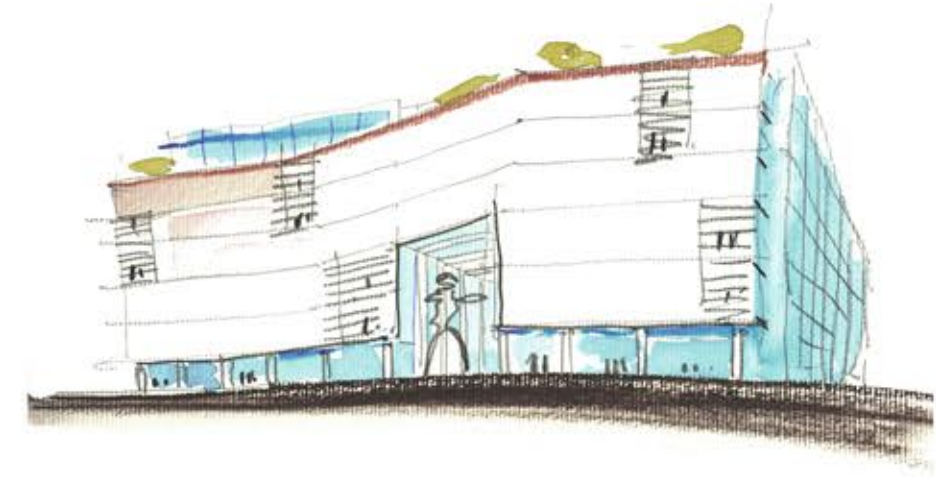
## description

The whole ensemble is made of 3 parts developed in successive stages which form a small coherent city in the shape of a flat, cut out massive, penetrated by gateway streets, which reinterpret the existing typology of the historic part of the city, that of public gangways. Inside these covered streets, a number of urban scale works of art will be placed. The ground floor will offer a multitude of services, ranging from retail, coffee shops, restaurants to fitness spaces, public services and temporary exhibitions. The upper levels accommodate class A offices.

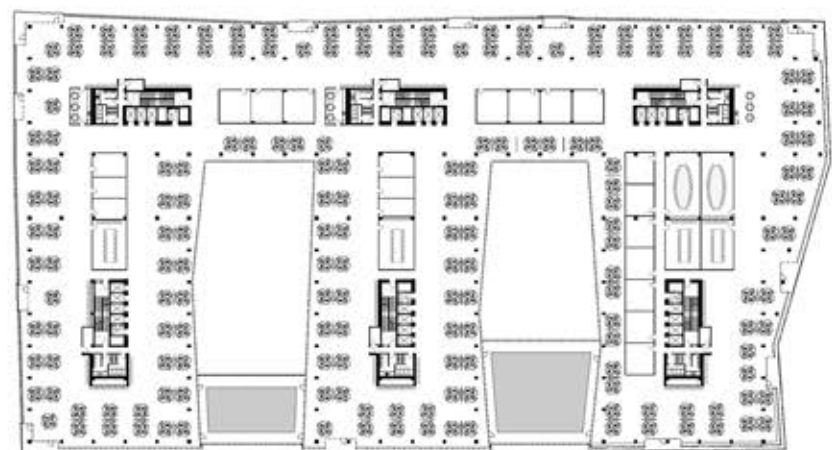
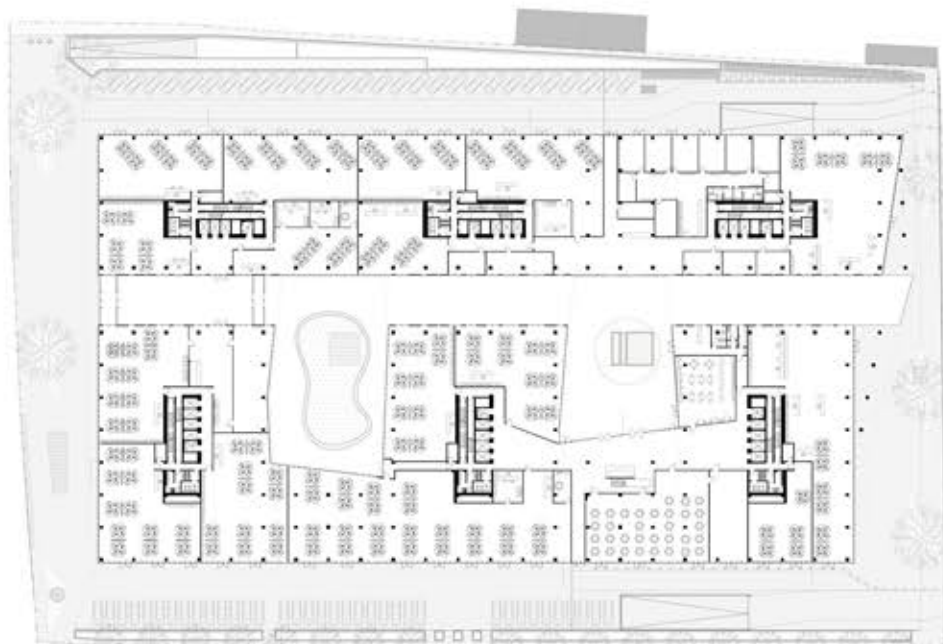


# scale & shape

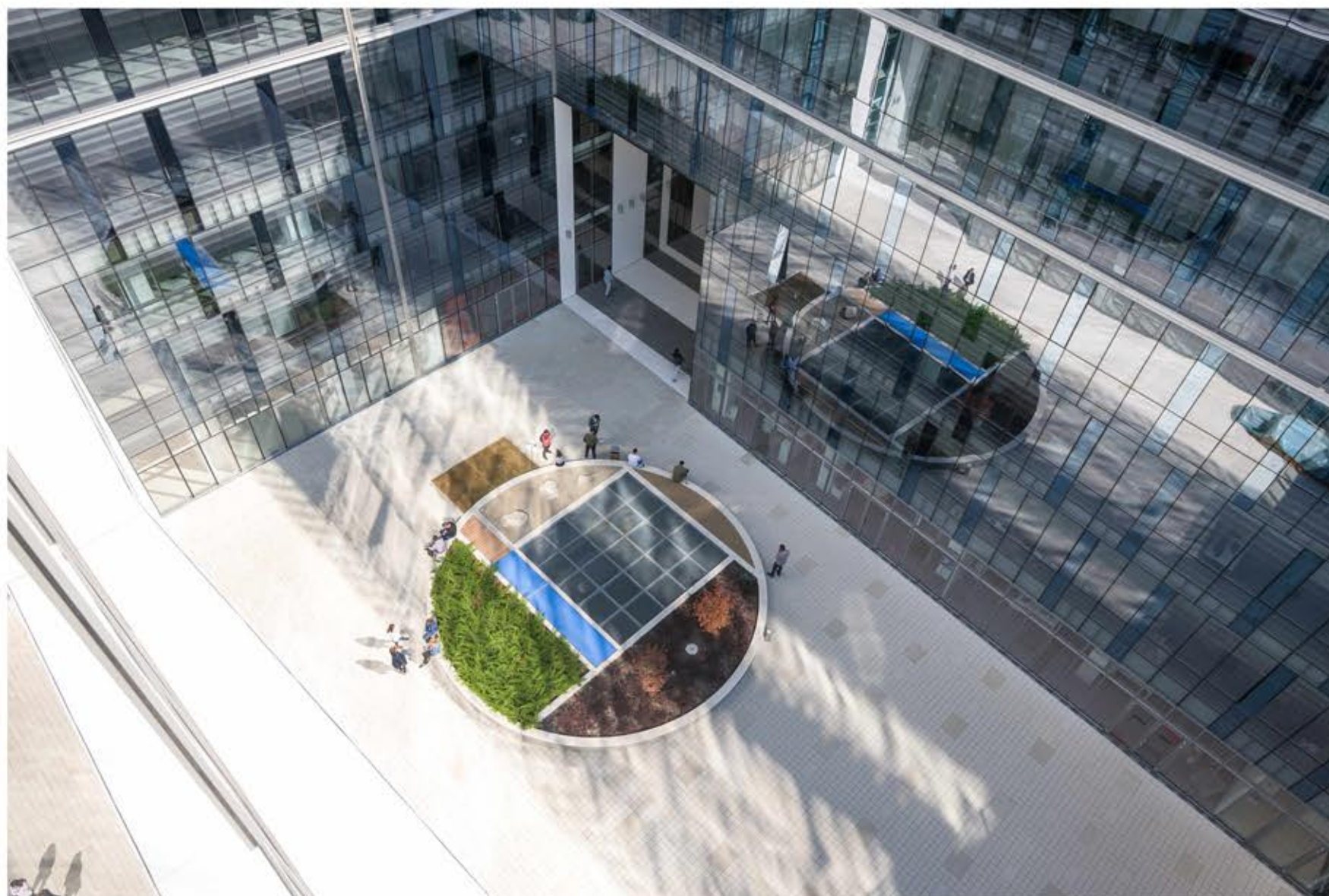
The urbanity of this office complex is generated by the interpretation of the pedestrian route on the south/north axis, from the boulevard towards the channel, sequentially emphasized by the alternating 3 gateways and 2 atrium courtyards. Likewise, another generator is the public /open nature of the ground floor all along the entire perimeter and the two passages which connect the atriums to the west side. This comb-like solution offers a generous opening to the west side - where the lower parts of the building are - thus allowing a much better lighting from that direction.







■ GROUND FLOOR PLAN   ■ SECOND FLOOR PLAN   ■ THIRD FLOOR PLAN



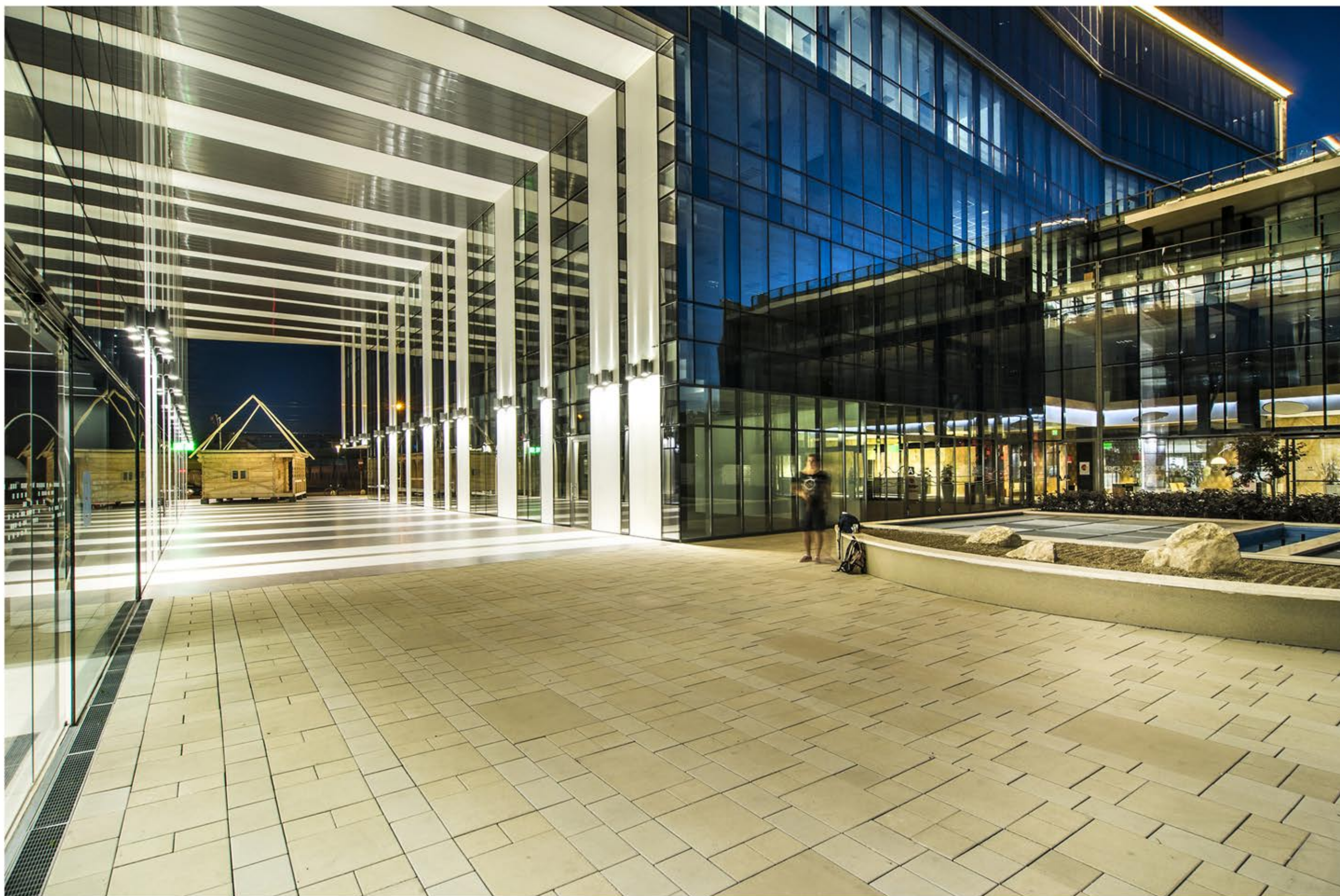


# interior courtyards

The Office Cluj ensemble, at an urban scale, has evolved into a small “city within the city”, with its three main gateways that connect the interior courtyards and urban plaza, all of this allowing both for a generosity in favor of the public space and an emphasis on semi-public and private spaces. The presence of works of art, public galleries, exhibitions, retail spaces etc. will generate an urban attractor that, in time, will play a significant role in the process of regeneration of the entire former industrial area.











# CFR HEADQUARTERS

Timisoara, Romania

---

Architect:

**Ioan Andreescu**

Year:

**2002**

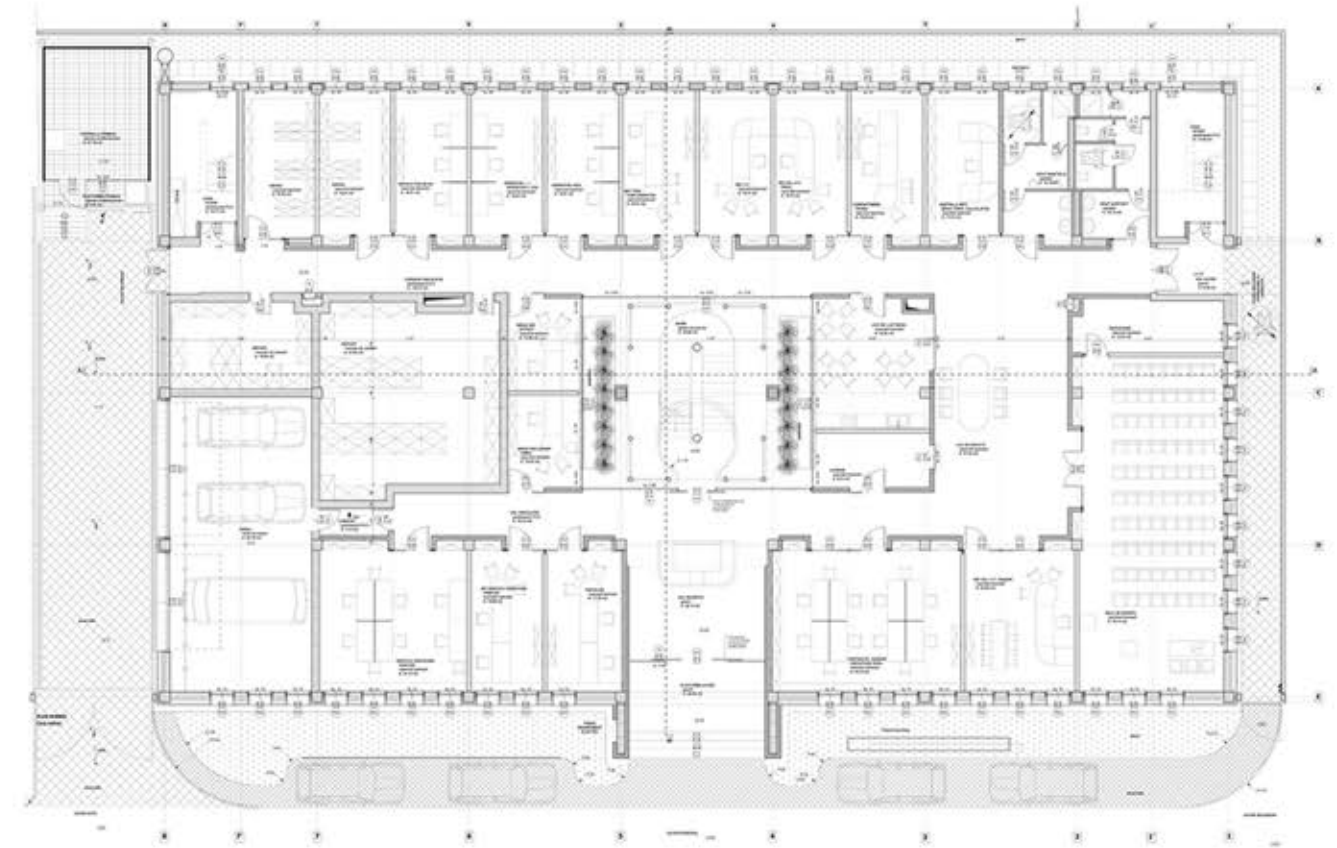
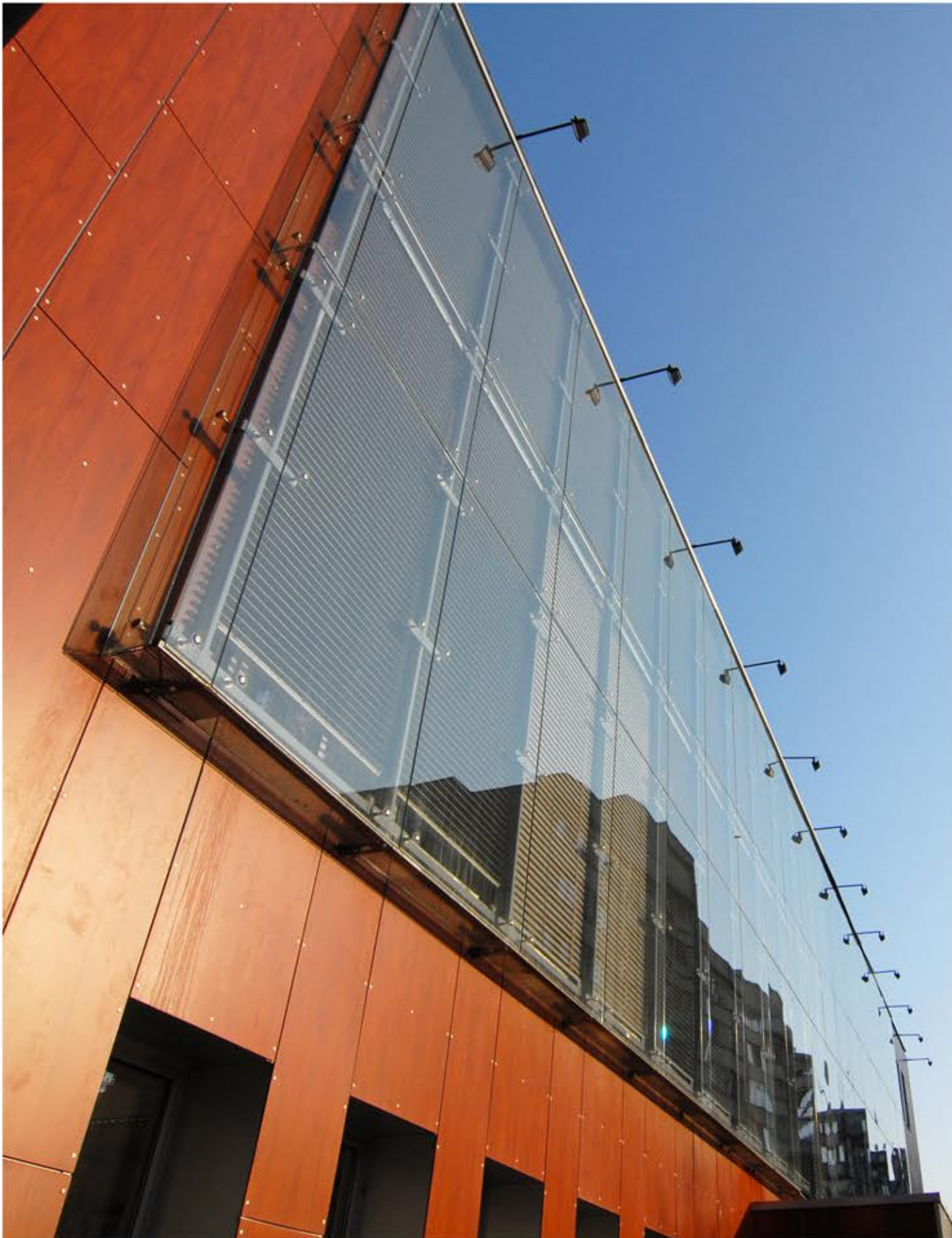
Collaborators:

**Dan Munteanu**

The headquarters of Timisoara CFR Marfa Branch was constructed through the conversion of the former cafeteria of S.C. «Electromotor» S.A. built in the 1960s.







## description

The compact structural organization of the former cafeteria consisted of 7 spans x 4 openings (6x6 m) and led to a solution based on the concept of flexible and efficient utilization of the volume, with a superimposed metal structure being put forward, having an inclined roof made of corrugated plate.

Along the exterior perimeter of the house – as thick as a bay, that is, 6 m – on the I<sup>st</sup> and II<sup>nd</sup> levels, the main spaces for offices and conference rooms will be positioned, and on the III<sup>rd</sup> level, the spaces for the management, protocol, the guest rooms and service apartments; such spaces are naturally lit and ventilated through vertical windows arranged rhythmically (4 windows with bays of 90 x 180 m).

The large transparent glass screen, located above the main entrance, offers the characteristic image of the house, which – located between blocks of flats, as it is – is defines itself by contrast, through its precise geometry and the uniform rhythm of the windows and panels of the ventilated façade.

■ GROUND FLOOR PLAN

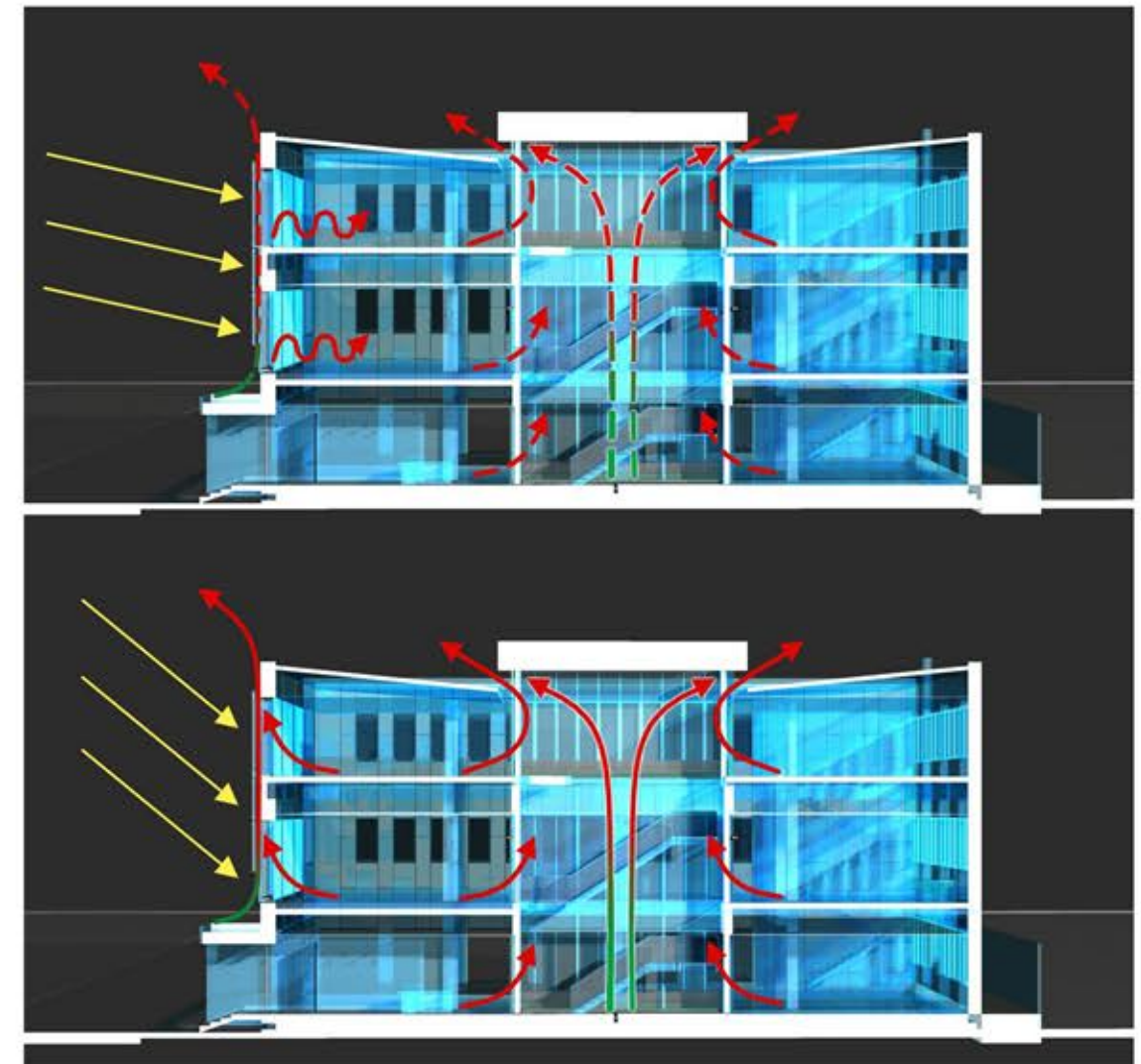
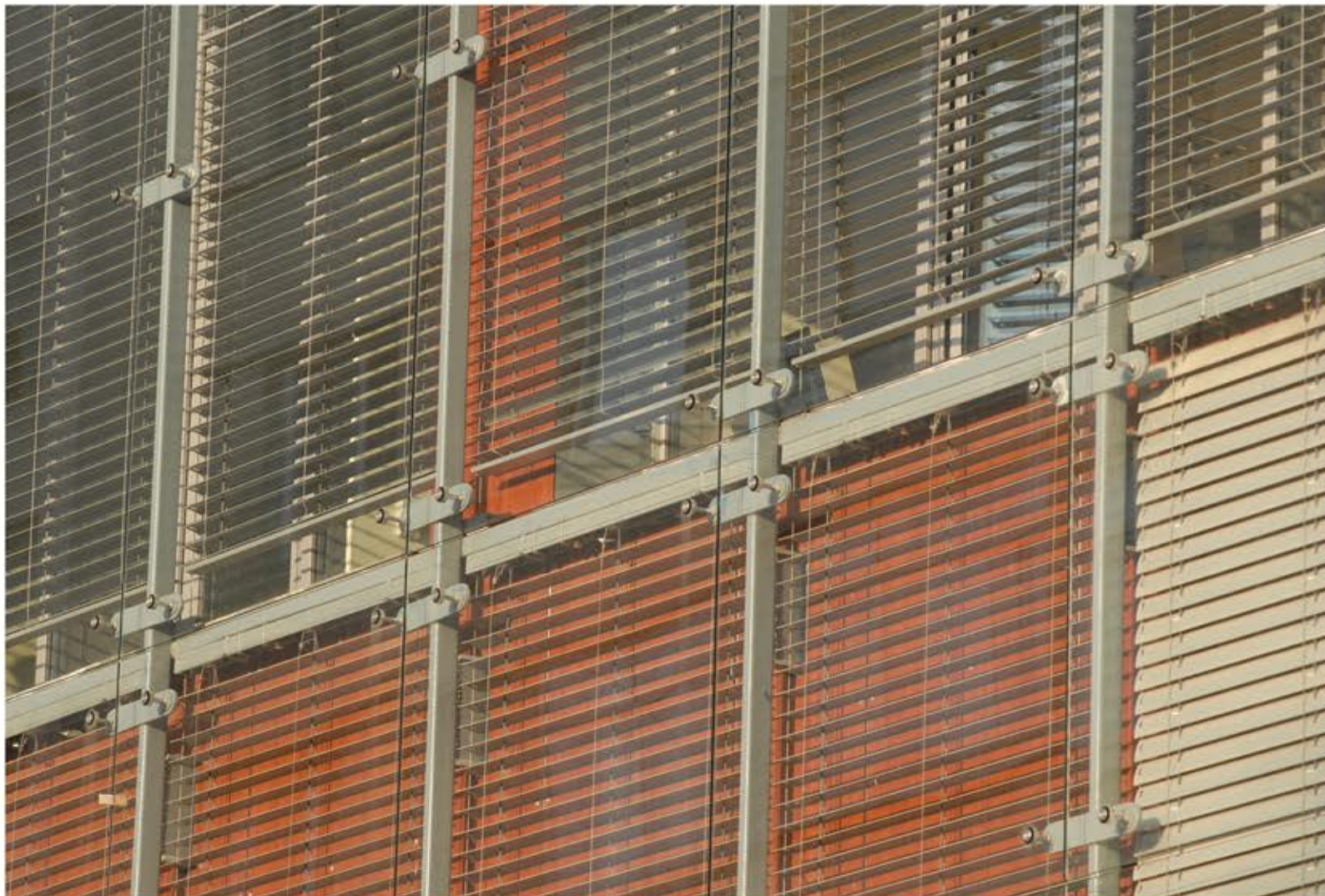




## facade & atrium

The physical, functional and climatic «centre» of the house is an «atrium» of 7.50 x 6.20 m which advances through the last board of the existing building like a glass structure, going slightly above the upper level by 0.5 m. This «atrium» enables natural lighting and ventilation of the spaces located inside the composition, on the 1st and 2nd levels, as well as easy access to the 3rd level (the superimposed level). There is a metal staircase with frosted glass stairs which organizes the main relationship between the floors.

The ventilated façade – positioned on three sides – concurrently provides a correct solution to the thermal problems of the house (through the aired layer of mineral wool) and a customized air through the wooden texture of synthetic panels, in contrast with the opaque metal appearance of the gap coverings, lined with sheets of rough aluminum.









# SAVOY HOTEL

Timisoara, Romania

Architect:

**Vlad Gaivoronschi**  
**Marius Hârța**

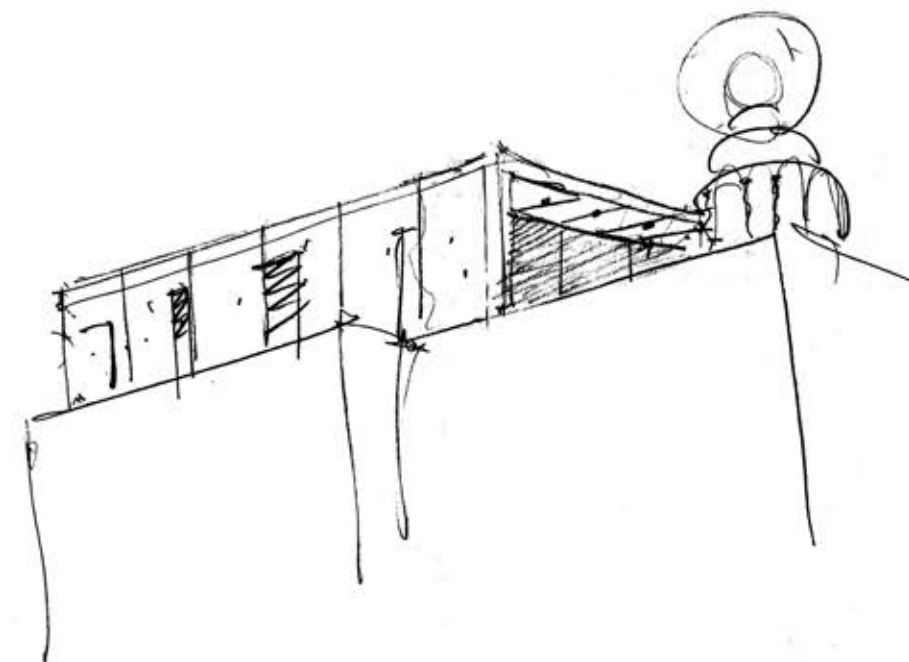
Year:

**2005**

Collaborators:

**Plamen Stancev, Costin Șelariu,**  
**Oana Sârbu, Maja Baldea, Dragoș**  
**Bocan**

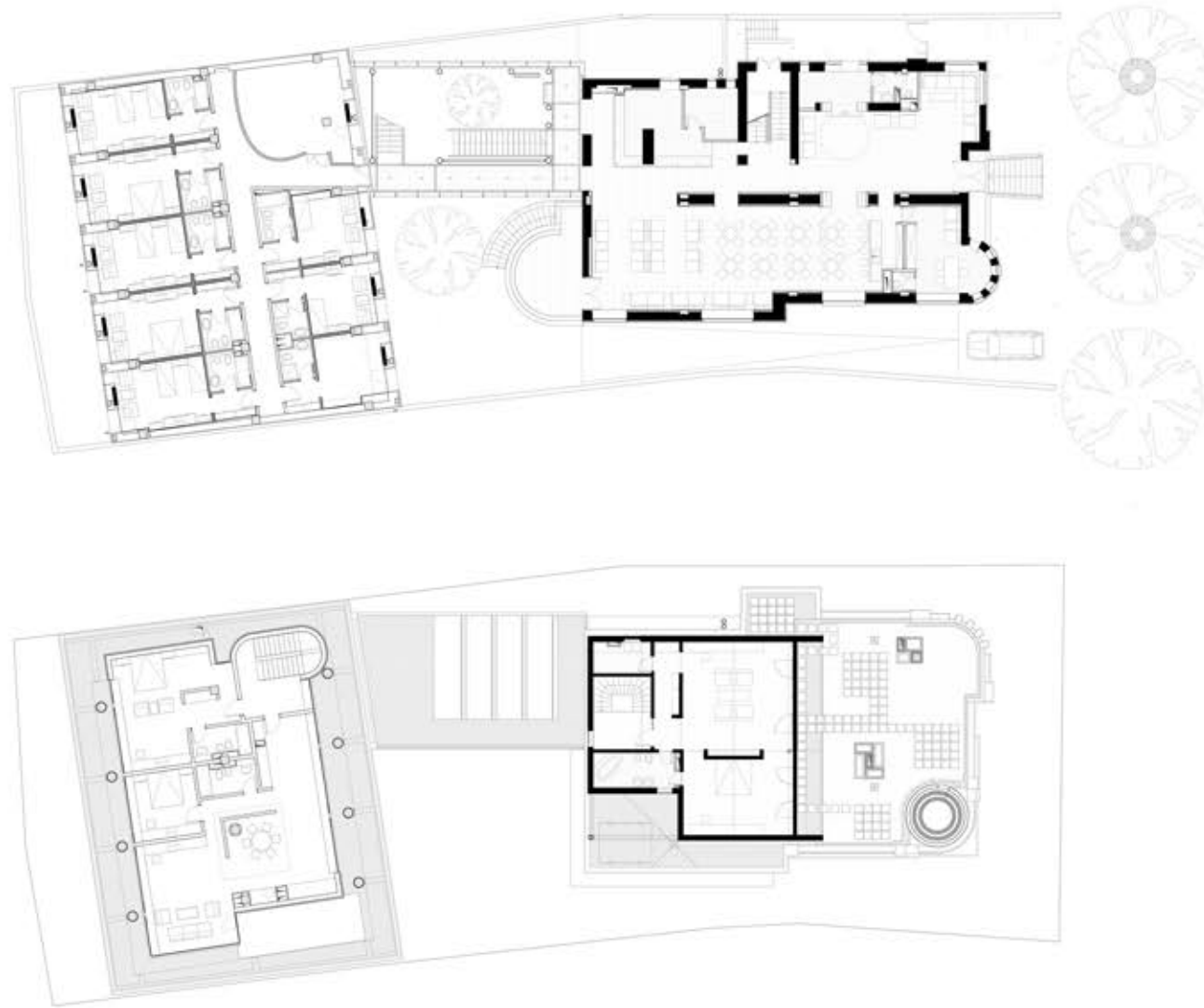
The conversion of Purcariu building (1934), into a hotel was a great opportunity to rescue this building, while preserving and emphasizing, with slight alterations, the style; what is more, we could create an atmosphere that would recall the interwar bourgeoisie, to which architect Purcariu belonged to.











## description

The project and execution were carried out in five years; as it was the change of name from Athenée into Savoy, so it was the investor's identity that brought along alterations and developments in the project, especially during the last three years. However, the overall strategy remained the same, consisting of the old wing of the building articulated via an «atrium» hallway to a new wing in the back of the parcel. ) The consolidation of the interwar house took into account the space flow and its liberation of the tectonic elements of the tall ground floor and basement, where public areas were arranged (hall, bar, reception desk, restaurant).

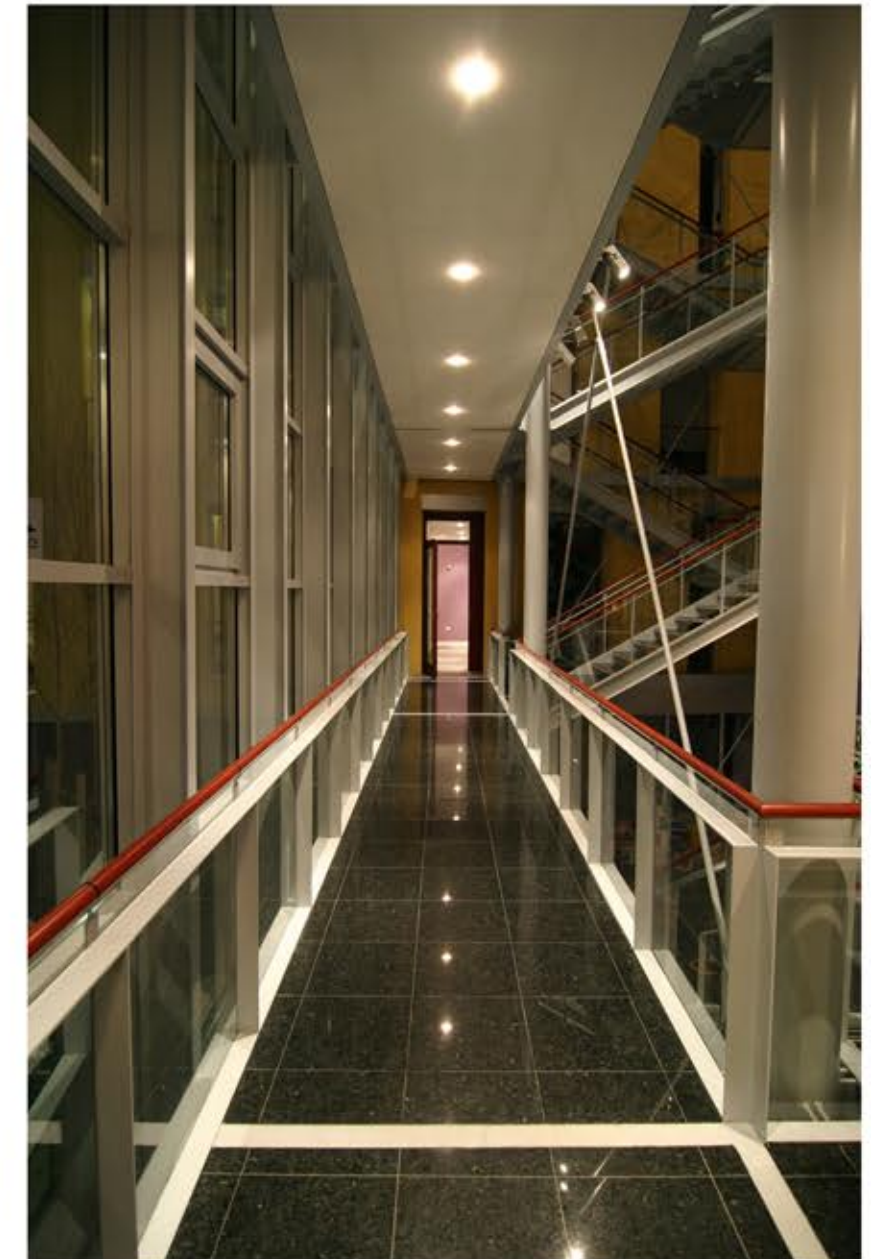
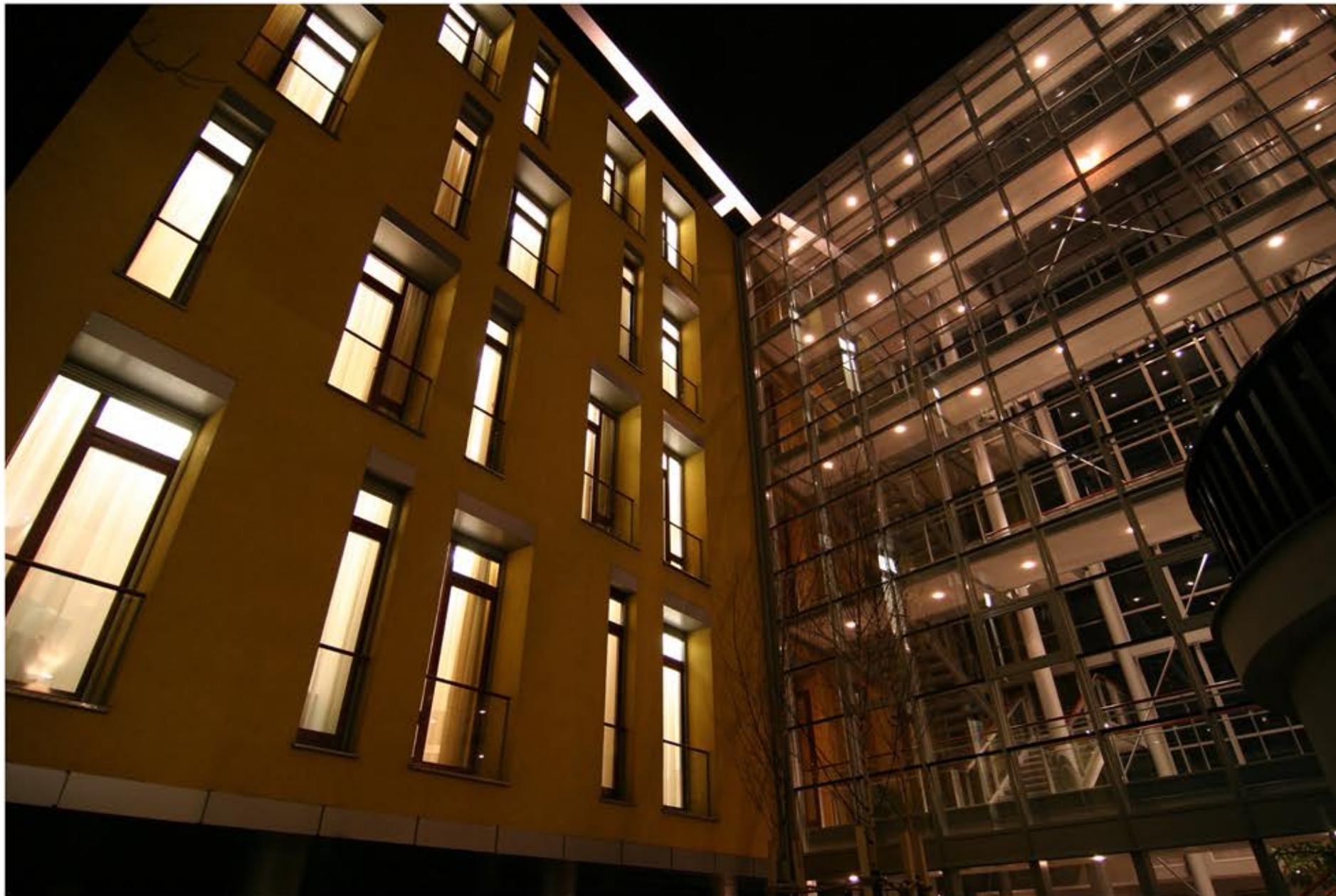
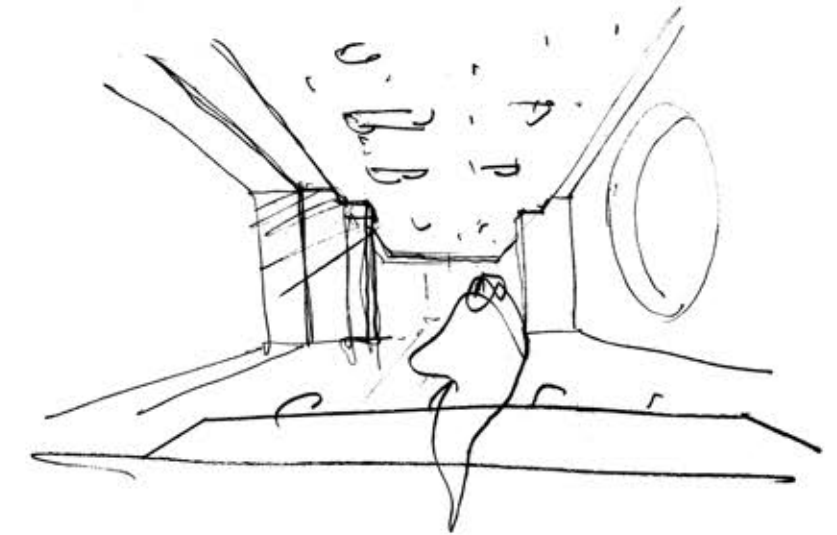
■ GROUND FLOOR PLAN ■ PENTHOUSE PLAN





The atrium comes as a surprise for the visitor; it is an «interior-external» dramatic space on the vertical; it has also a bioclimatic function as greenhouse in winter, naturally ventilated space in hot summer, featuring a tree in the middle; the sunken courtyard is planted with young birches; both the footbridges and the staircase with articulated steps float inside this soaring, dynamic space, characterized by the slimness and honesty of the braced metal structure, the light filtered through the spots from above, the movements of the elevator and that of outside light coming from east and west.

The rooms of the old wing have different sizes and configurations, yet finished in the same manner, with heavy, somewhat retro furniture of brown-meranti wood, black and white chequered tile bathrooms; the penthouse apartment is modern, characterized by a fluid space, open, completely glazed to the green terrace. The rooms of the new wing come in two types are quite modern, with beige furniture and bathrooms, following the spirit of the new wing; the corridors have a violet background wall, perpendicularly emphasizing the major axis of movement within the ensemble.





# REGHINA BLUE HOTEL

Timisoara, Romania

Architect:

**Ioan Andreescu**

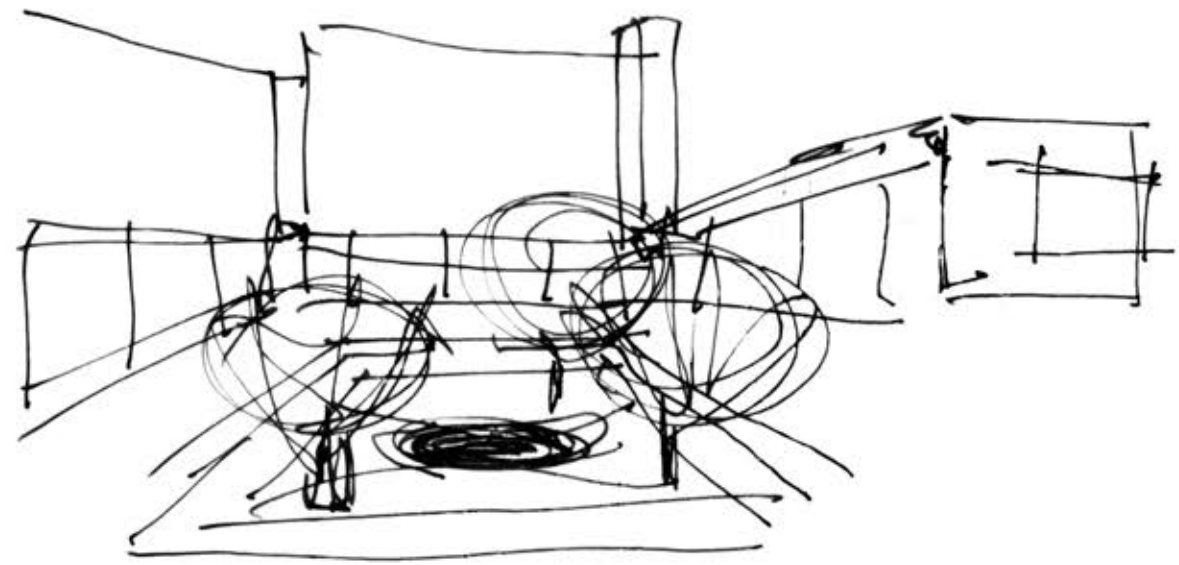
Year:

**2002**

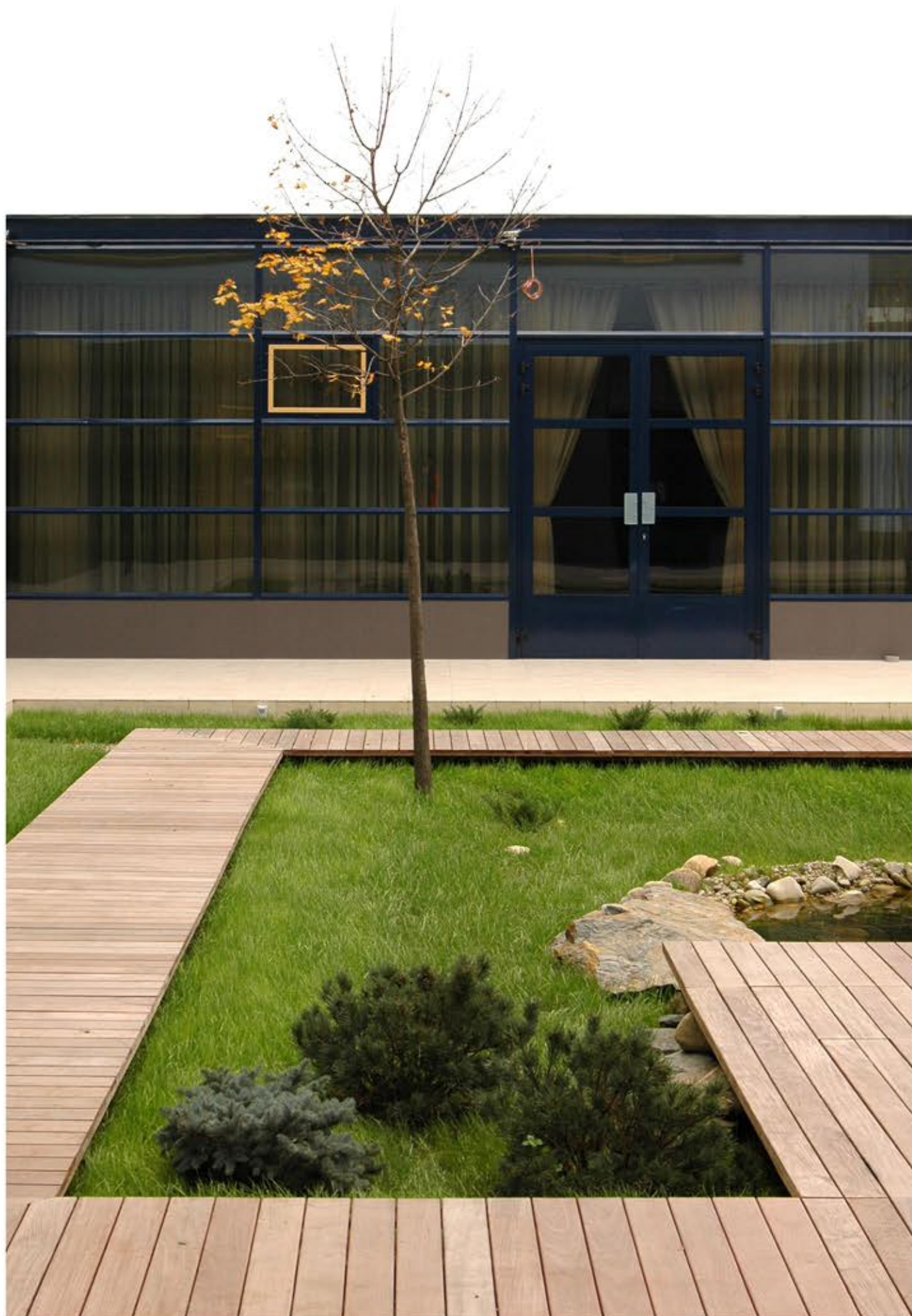
Collaborators:

**Dan Munteanu**

The blue hotel placed among gardens, covered in glass and discrete geometrical lines, strives to be as little present as possible, to occupy as little ground as possible, to provide the background and not the content.







## description

The Reghina Blue Hotel negotiates with the air: it is blue, diaphanous, transparent, translucent and penetrated by air streams. It reflects, refracts, shines, looks up at the sky and exists in the air. In its turn, water is omnipresent: in the inner courtyard, in the fish basin, in the swimming pool surrounded by wooden surfaces, in the drops condensed on the glass roofs. The ground, the rocks, the vegetation, the wood – as a fusion of elements – all such are equally present, ready to counterbalance the dissolution in the blue sky. Fire is present at the very heart of the house: the vertical skylight, which pierces the main building, is made up of Fresnel micro-prisms which condense the sunlight in concentrated form. The hours of the day and the changing intensity of the celestial fire are augmented inside the house, a way of feeling the continuous throbbing of the universe.









# the two ponds

The project, as it appears upon completion, is not the one originally envisaged. Throughout its laborious construction, the hotel has grown: the swimming pool has become larger, the penthouse has taken shape, the inner courtyard was outlined concurrently with the conference building, and the bipolarity of the composition organized between the two ponds.

The quality of the materials and of the details, coordinated by proportions and standards, nourished by the relationship with the elements, is an ingredient of that «ambiente» and «ben essere» so much sought after by the consumer, and in no circumstances an imposition, a pressure and an intrusion on the part of the architect. Sometimes, less architecture is in fact more.

## ■ CROSS SECTION









# HOUSE OF ART

Timisoara, Romania

Architect:

**Vlad Gaivoronschi**

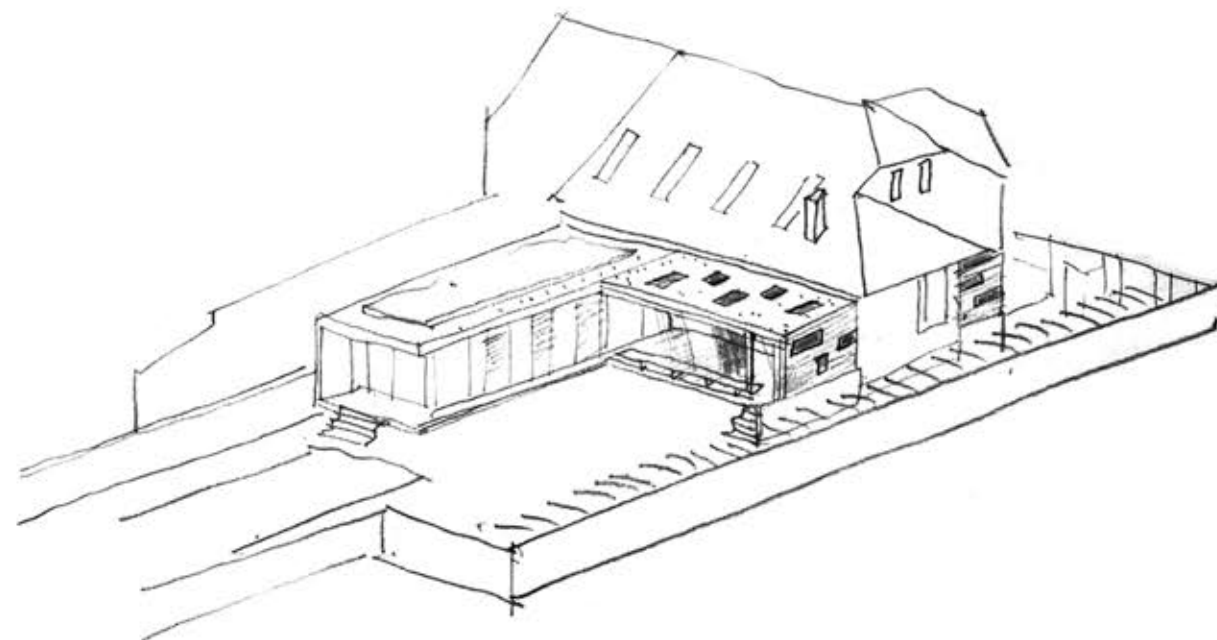
Year:

**2015**

Collaborators:

**Dan Munteanu, Iulia Frățilă,  
Bogdan Raț**

The existing house is situated in a central residential area in Timișoara. It is a building erected in 1930 and it's a part of a two groundfloor coupled houses. Considering the brief of a dwelling for a couple and two children, the existing building was regenerated, (transformed, restored ) and completed in the attic and a new addition behind, in the backyard.







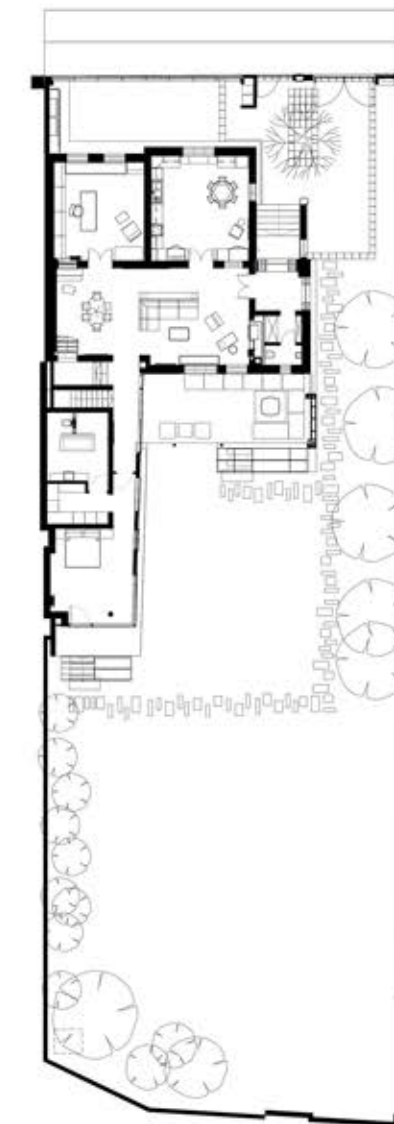


# description

---

Even though it is not a historic or an architecture monument, we considered keeping the spirit of the old house very important and realized the enclosure to the street in an interwar local fashion. In the interior, the existing house was radically transformed, practically realizing the children apartment in the attic and the placement of the interior stairs on the opposite wall from the entrance.

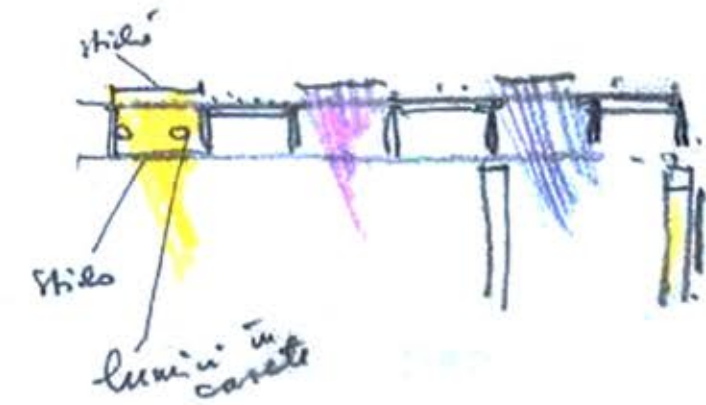
The ensemble offers two antithesis atmospheres, to the street and inside the old house one specific to it's nature with clearly defined rooms and the other in a relative contemporary language for the addition and the outside room and there is a surprise offered in the private area. Another surprise is the integration of plastic art, thus the architecture of the whole ensemble is trying to play the role of a good host for the beautiful collection.





## renovation & extension

The strategy of the project had in view aspects considering the east-west orientation of the plot but also the blind wall of the neighbor house. Thus the contradiction, to occupy the south plot with the house extension on the blind wall. Being just a tall groundfloor, the capacity to overshadow the courtyard is insignificant. In exchange “the open air room”, covered with a structure of wooden beams and glass became the most special place of the ensemble, an intermediate pleasant space, an extension of the living room, furnished with low sofas.



The semi-basement of the ensemble has expanded, accommodating, besides the mandatory technical spaces – heating system, washing room, drying room, storage – also a hobby type room; here the atmosphere is a little more Spartan-like – exposed concrete, etc. – but in the immediate proximity, under the stairs that go up to the tall groundfloor, is the cold storage for the wine collection in an impeccable wooden framed rack. The house relation with the private garden is one of an open amphitheatre, with plastic art standing on the grass.







■ HOUSE BEFORE RENOVATION

■ HOUSE AFTER RENOVATION





# HOUSE WITH COLORED LIGHTS

Timisoara, Romania

Architect:

**Vlad Gaivoronschi**

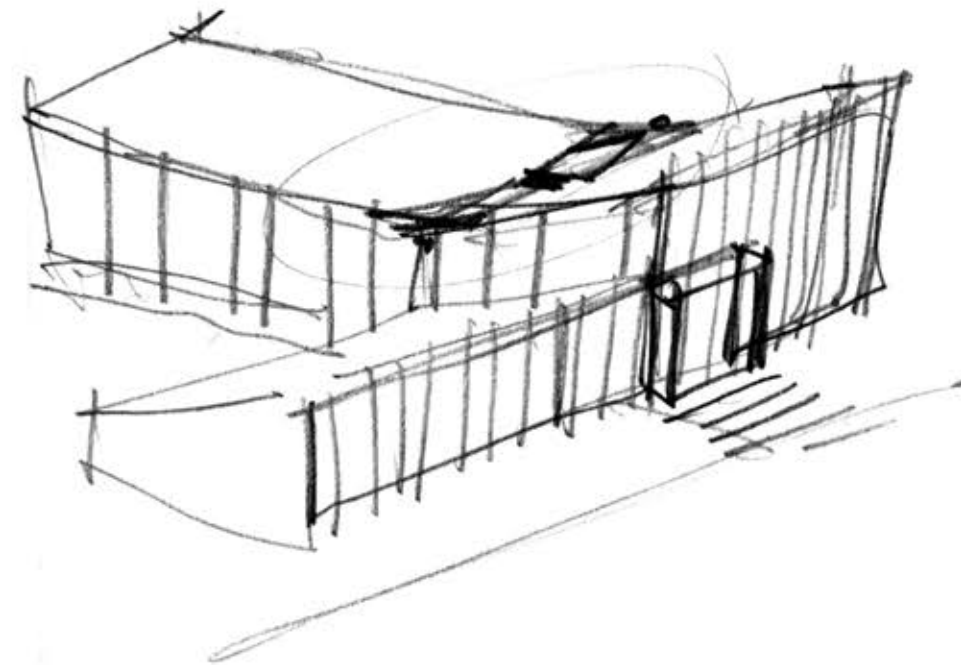
Year:

**2013**

Collaborators:

**Mihai Ungur**

Located on a lot with a pronounced depth, in a residential area in the South of Timisoara, the house adheres to the street front, modestly following the example of the nearby buildings. The façade lines are simple and clear, leaving room for a rich inner life, connected to the natural elements and enlivened by coloured lights.







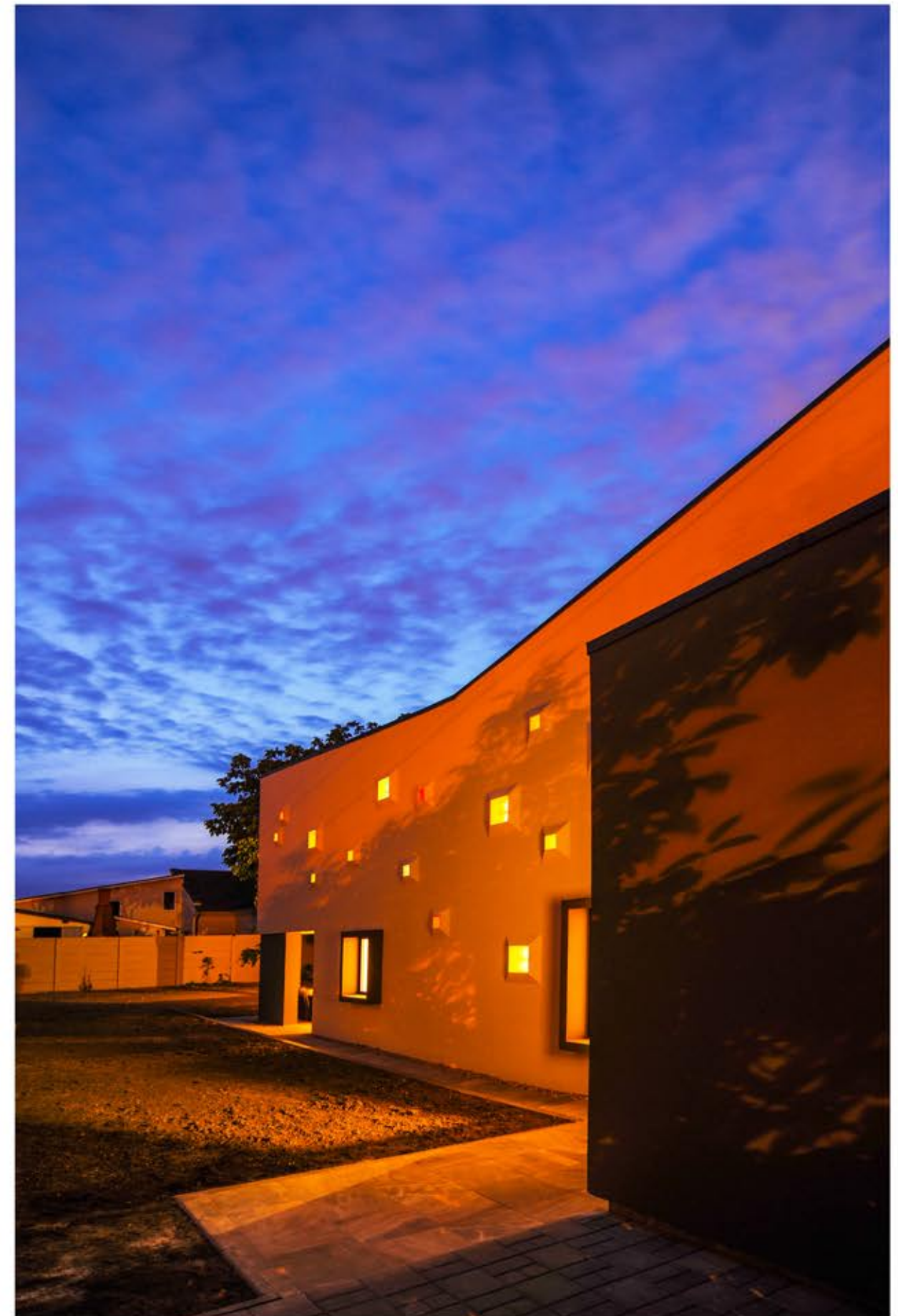




## description

The house is located in an residential area in southern Timisoara, Romania. The neighborhood consists of isolated houses that follow a constant alignment to the street. The plot is similar with the rest of them, 17-18 m to the street and 40 m in depth. The street façade is east oriented, the back garden, with the big walnut is more alive at sunset. The house is positioned on the north part of the plot and the south façade is very important.

The main entrance to the house is through the southern garden. There is also another access from the car area, on the northern part of the house. It is a long and sinuous path from street (public) to the private and it is followed by the surprise of the garden deep inside. The covered outside space behind the living room, bringing together outside and inside will be one of the main places of the house. The rooms on the ground floor are also well-lit due to their direct connection to the exterior - the living area and kitchen are continued with a terrace that opens into the back garden, dominated by the presence of a walnut tree.

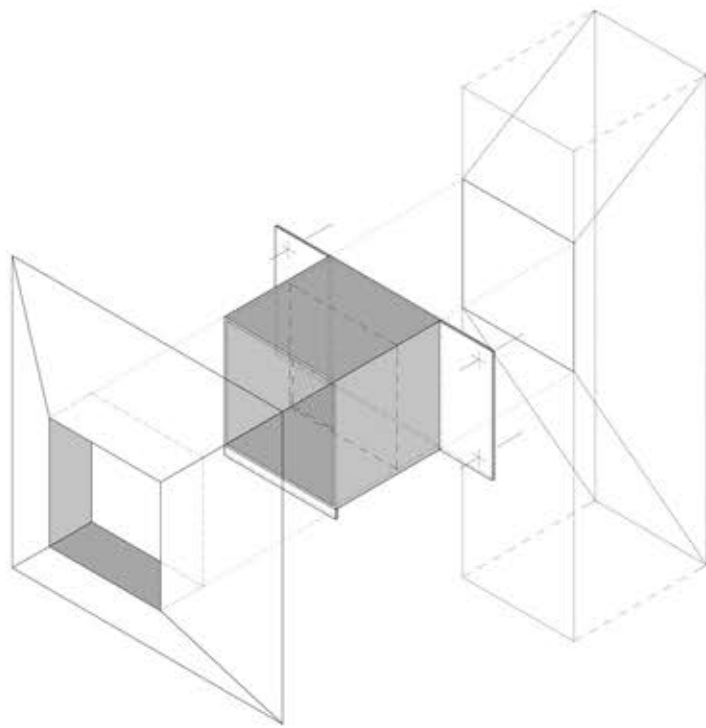




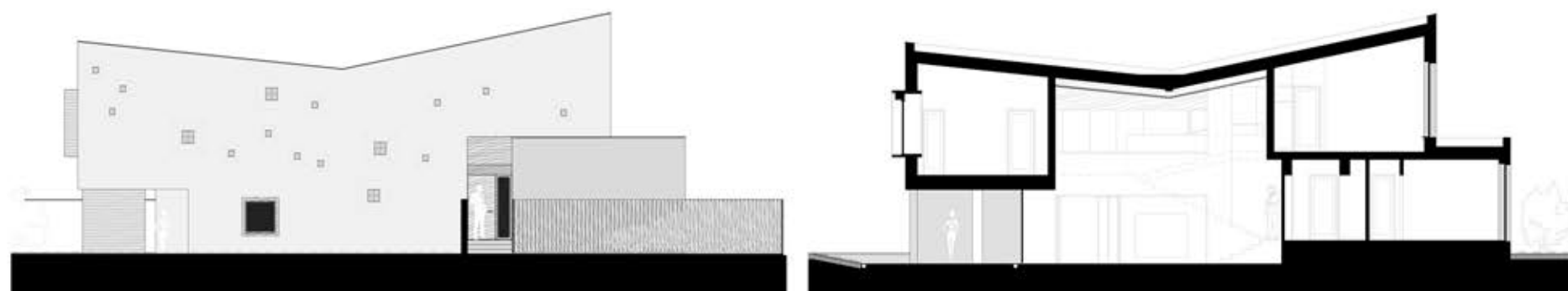
# the colored lights

The entire space was designed as a "musical instrument", where the double-height living room is a lively place, animated by the cone-like openings oriented towards the South, which amplify the sunlight that enters the house through the many coloured glass. At the same time, the space contains an "architectural promenade", generated by a system of staggered levels, with oblique viewing points. The coloured light beams are also present in the Eastern and Western parts of the house, inside the marital bedroom, located at the topmost level and inside the mid-level bedroom, as well as in the adjoining bathrooms, generating the special mood that makes up the trademark of the project.

Inside, a few of the elements are reminiscent of the tectonics of the house, especially the exposed lamelar wood beam that sustains the roof. The finishes and furniture, which establish a colour contrast, contribute to the feeling of balance and calm that defines the overall aesthetics of the house.









# AB HOUSE

Timisoara, Romania

Architect:

**Vlad Gaivoronschi**

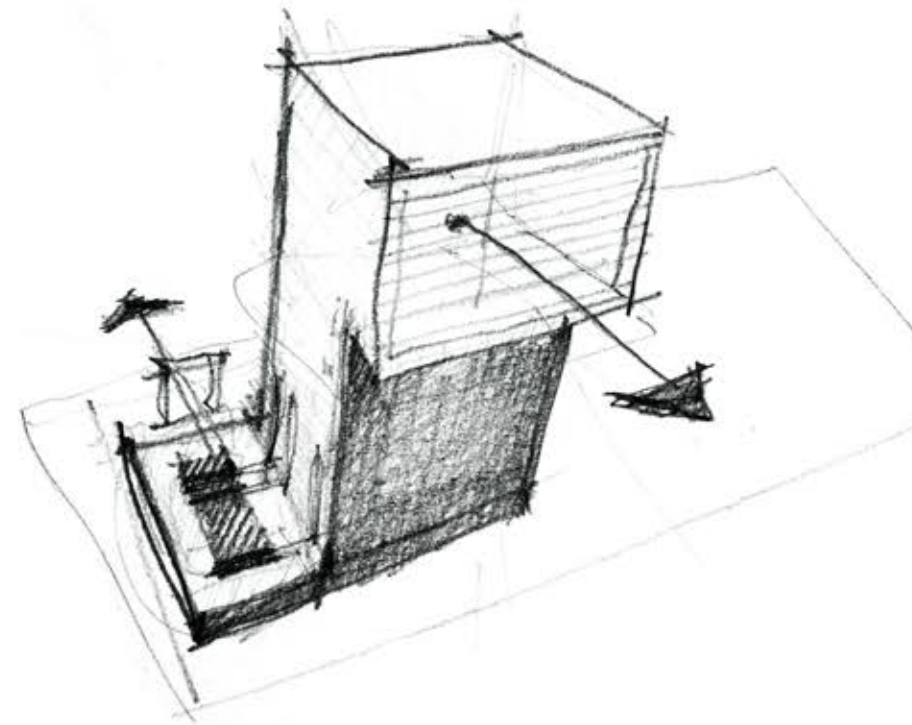
Year:

**2013**

Collaborators:

**Alexandru Mălăescu, Dan  
Damian, Andreea Simici**

The house is built in a residential area in the north of Timisoara, Romania. Nearby, there is another house we designed 13 years ago, which develops the same idea of a „house on a house”. It has to do with a social phenomena typical also for Italy and Greece, where young members of the family live with the parents and. This coexistence was sincerely expressed in both cases: the „young house” on the „old one”.





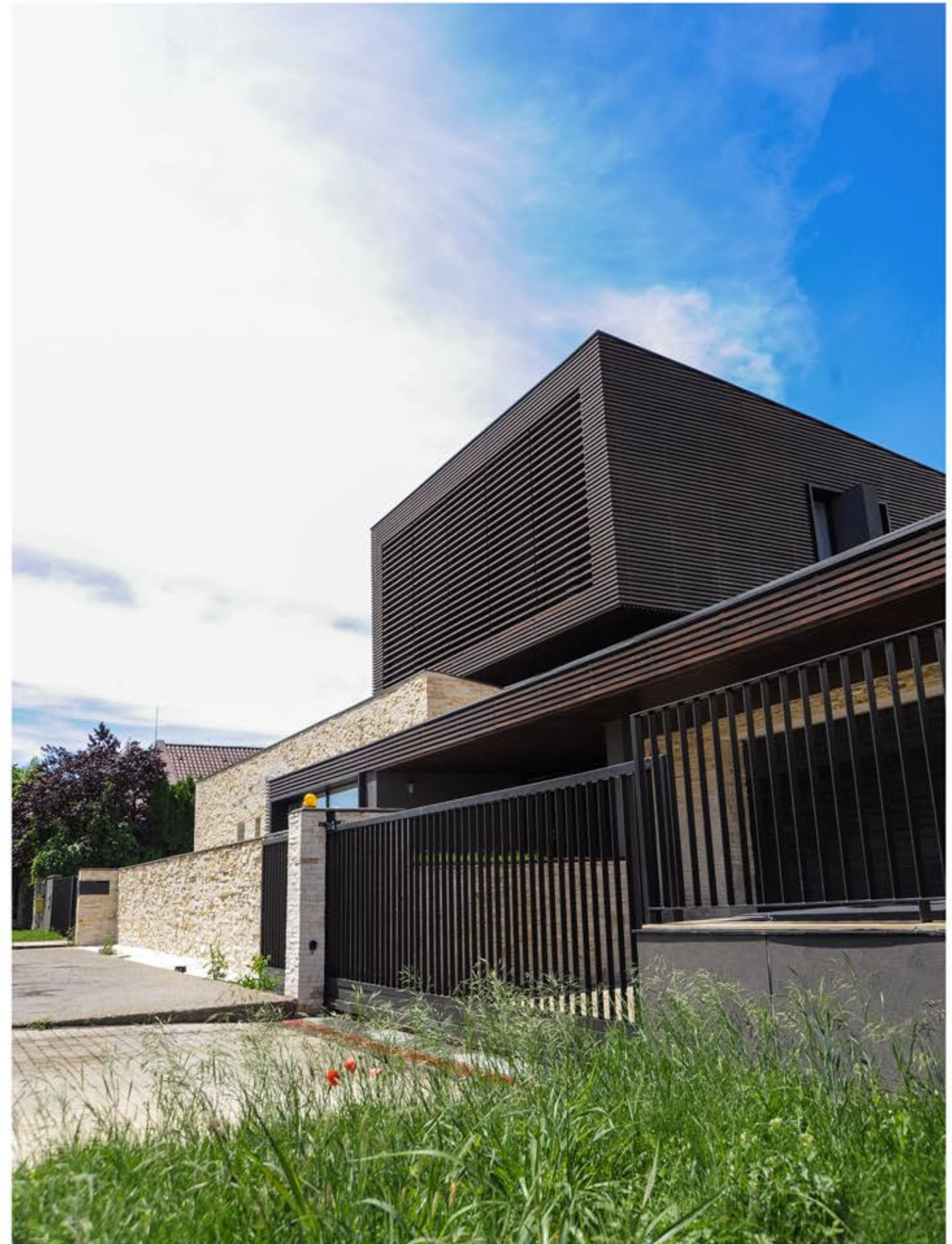
## description

---

The plot where this house was built in the last years, is in a residential area in the north of the city. It is not a typical plot, it was a big piece of land which was parceled in the nineties.

Like all other houses, this one also keeps the alignment to the street. Nearby, on the left, there is another house which I designed 13 years ago, and this one is in a way a replica because it develops the same idea of a „house on a house“. It has to do with a social phenomena typical also for Italy and Greece, that young members of the family remain to live with the parents and, in a traditional way, young families coexist with old ones. This coexistence was sincerely expressed in both cases: the „young house“ on the „old one“.

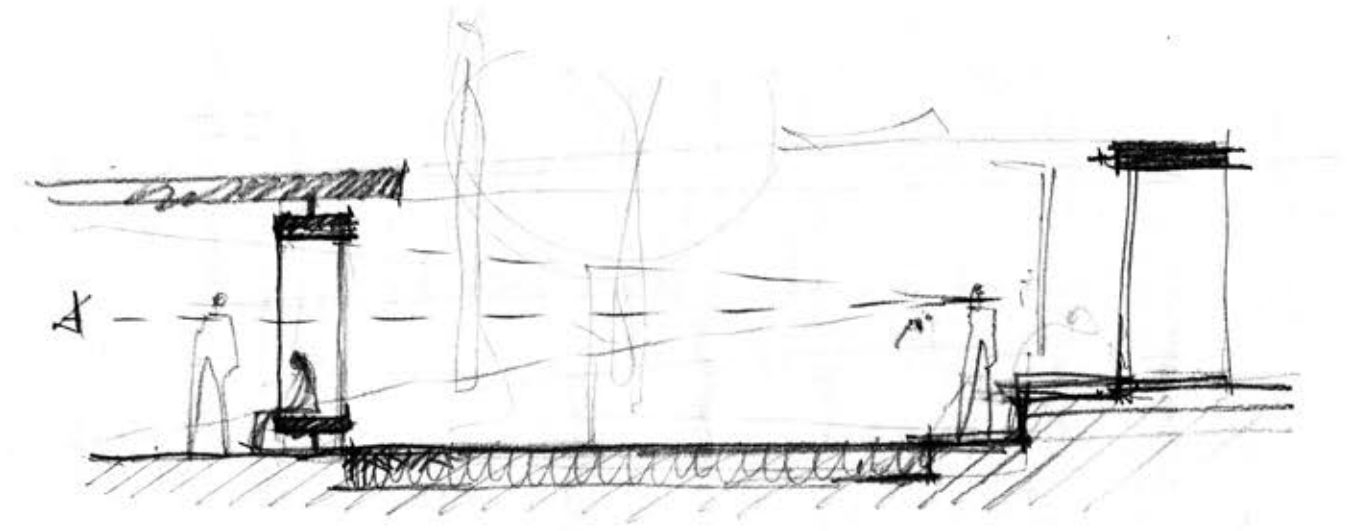
Wood means young, fresh, stone has to do with root, long time... Houses of wood on bigger houses in stone. More than that, this juxtaposition has to do with a public/private dialectics.





## visual relations

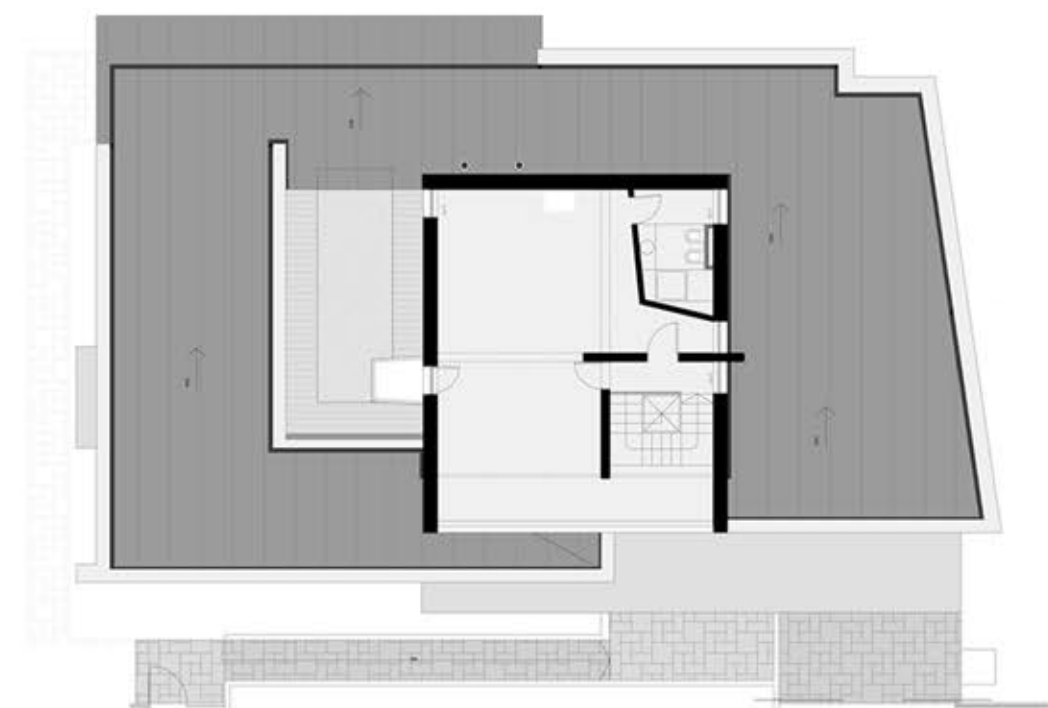
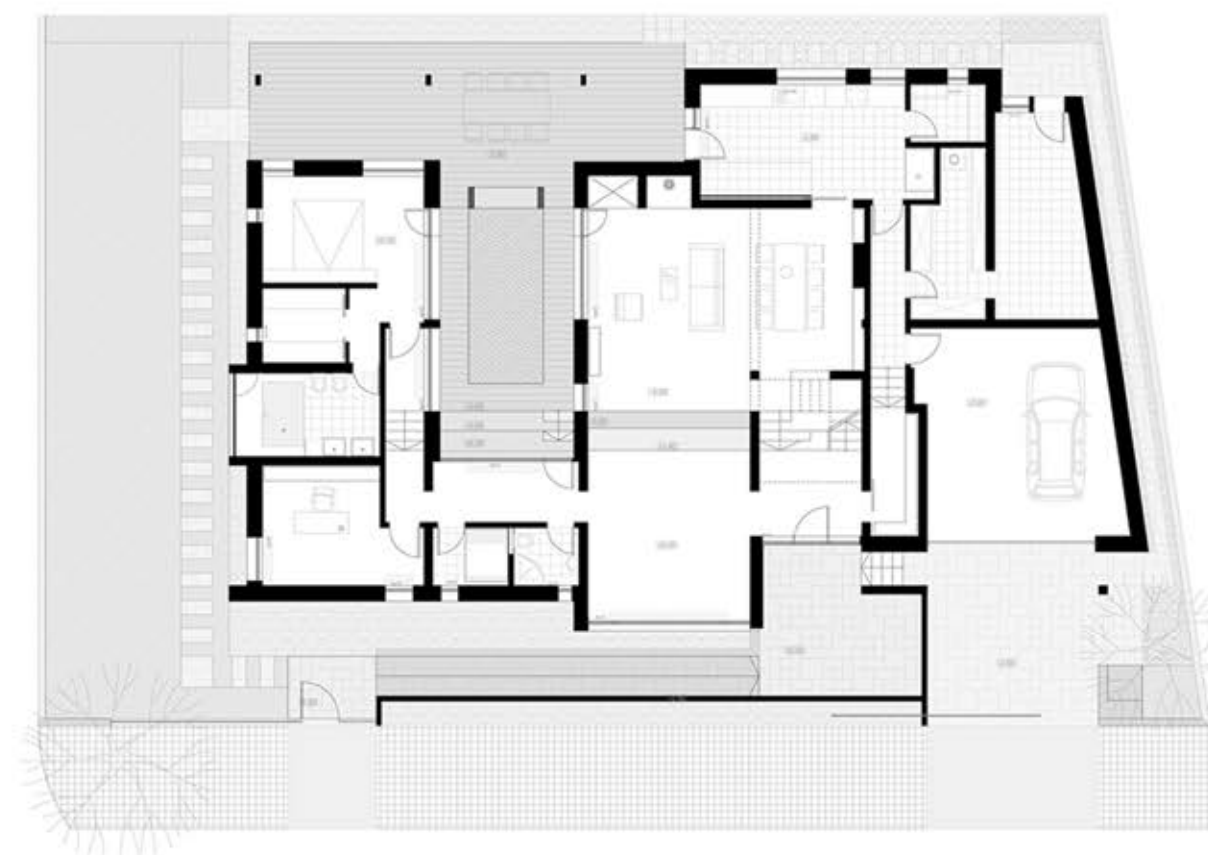
The living room is developed as a “theatre”, you can observe it from different levels. There is also a more private part, at the first floor, like the “women’s room” in traditional oriental dwellings, a space from where you can observe but you are not observed. There is “an interior wooden fence” of aligned vertical elements which are closing/opening this relation.



The apartment contained in the wooden house from above is enough also for a young couple. The inside/outside relation is also developed here, without dismantling the unity of the box: an intermediary space to the south behind wooden louvres, a thin balcony to the west, to observe the atrio and the dawn and a vertical incision to the east, to directionate the rising sun....

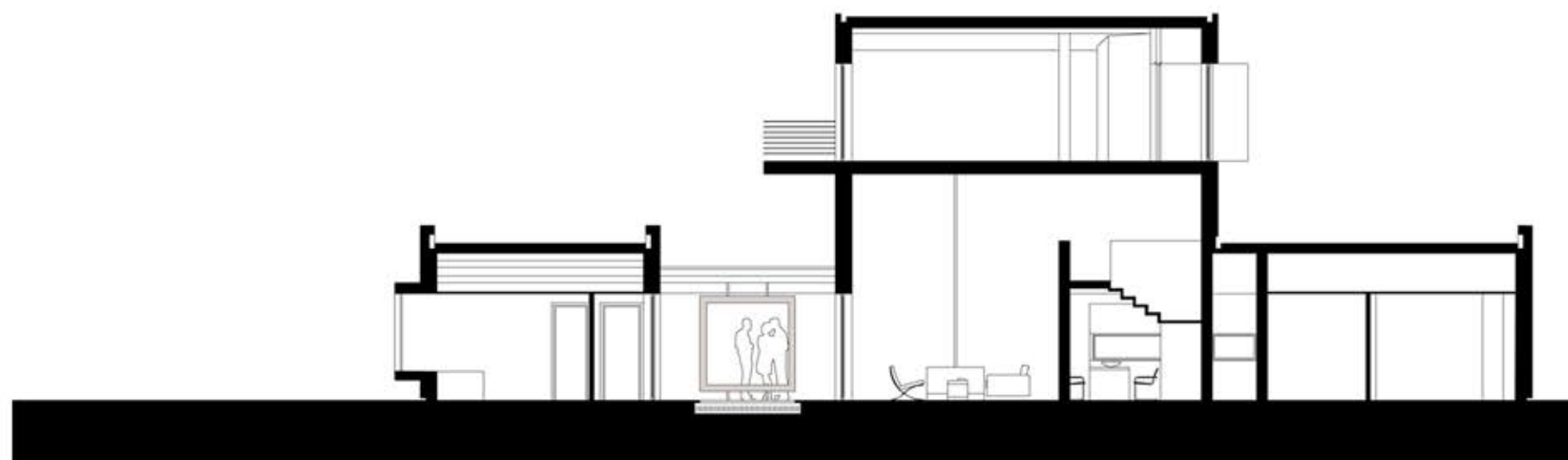
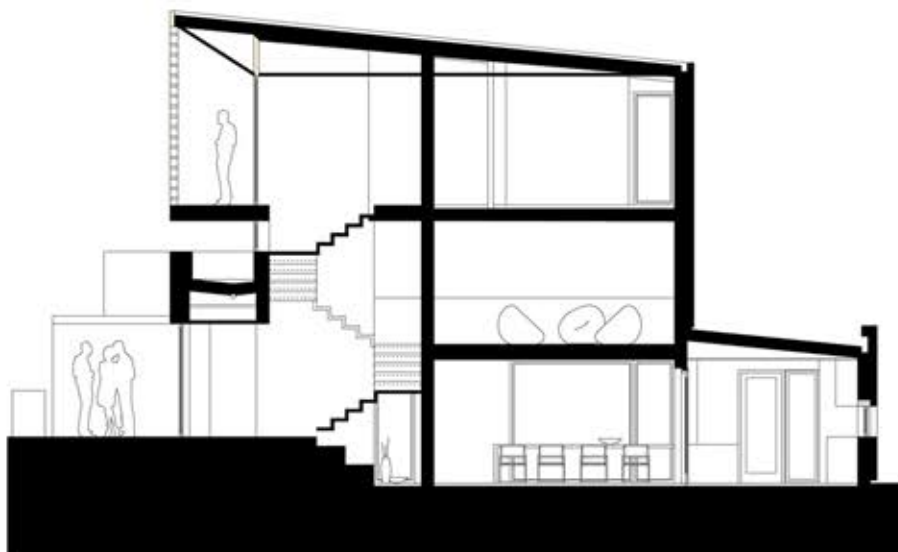






■ GROUND FLOOR PLAN ■ FIRST FLOOR PLAN







# CASA HARMONIA

Timisoara, Romania

Architect:

**Vlad Gaivoronschi**

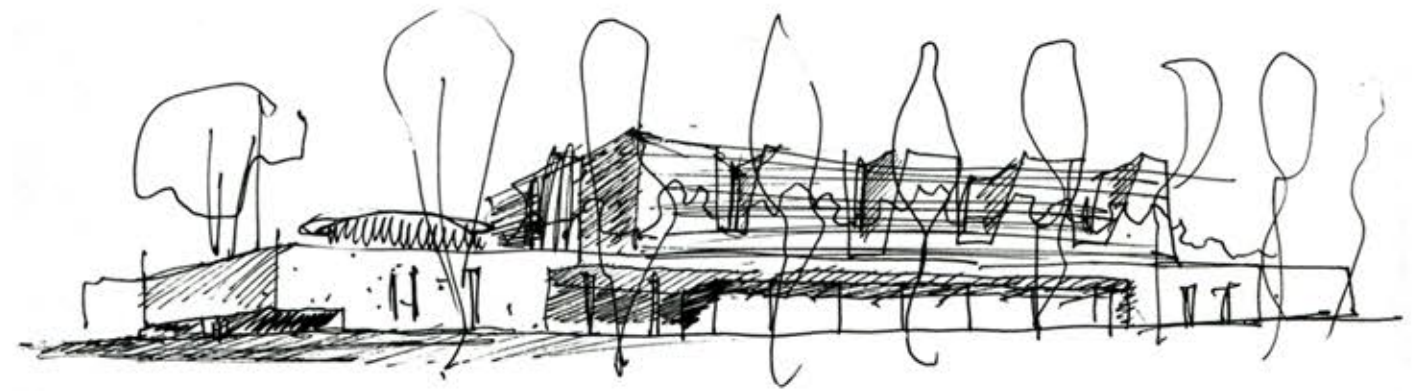
Year:

**2010**

Collaborators:

**Ovidiu Micșa, Mihai Ungur**

The Harmonia House is a private home for seniors, designed and built between 2007 and 2010 in the west side of Timisoara. The area is a residential one and it has other social facilities; close by there is the Rudolf Walter centre for orphans and children with disabilities.



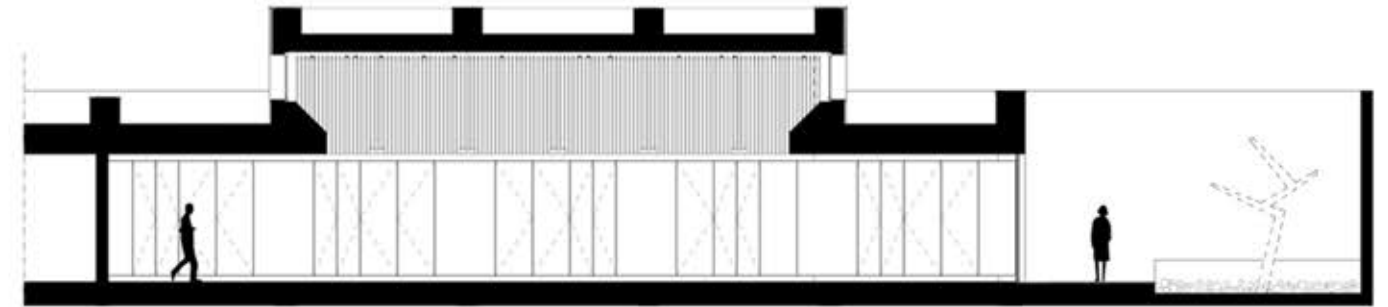






# description

The Harmonia House is a linear and rhythmic composition, along an important street that connects the city with the “Plopi” residential district. The entire area has lots of green surfaces and it enjoys the proximity of the Bega canal. The two story height, the rhythm of the loggias and the main dominant as an extended stone socle of the ground floor are the distinct features of this horizontal ensemble at a first glance.





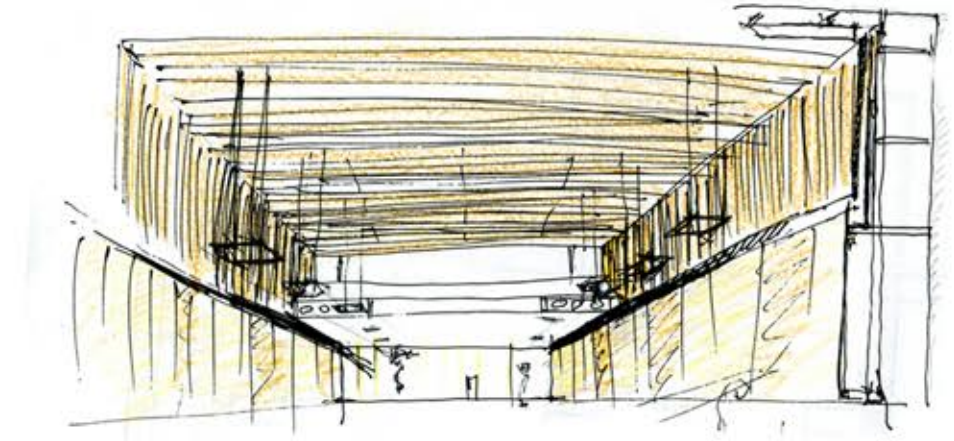
# functions & relations

## THE SERVED SPACES include:

Accommodation for the 3rd age and in a small degree for the 4th age (it's a hotel type retirement house), rooms for the medical assistants, special bathrooms for people immobilized in bed, socializing spaces at each floor.

Common spaces, the welcome area – reception, directly linked with accommodation, the multifunctional space and the rooms for dinner, etc.

Other common spaces, such as a hairdresser saloon, a barber's shop and especially the SPA spaces including a small swimming pool, jacuzzi and a multiconfesional chapel.



## THE SERVANT SPACES consist of:

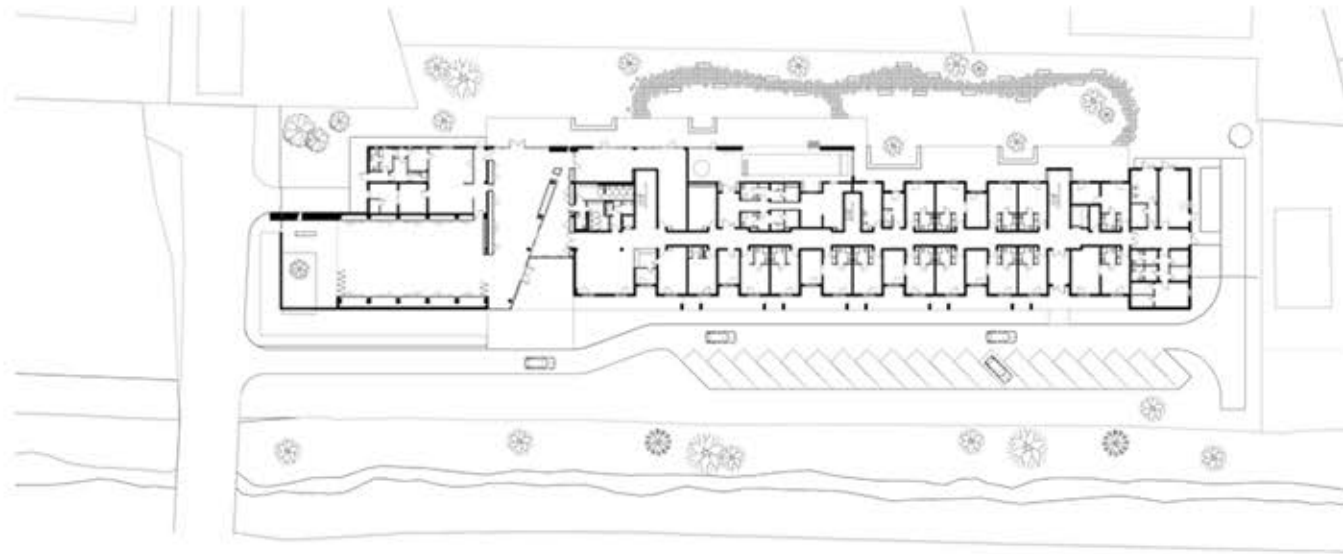
The kitchen, very well equipped, the administrative offices, general counseling and the washing room, the drying room, technical spaces.

There are a few intermediary places and area, thresholds that give a specific nature to this ensemble:

Intermediary spaces that mediate the interior – exterior relationships from the access area –the interior courtyard, the interior garden adjoining the multifunctional space or the balconies that gather around them three accommodation modules, thus becoming “open air rooms” –socializing places;



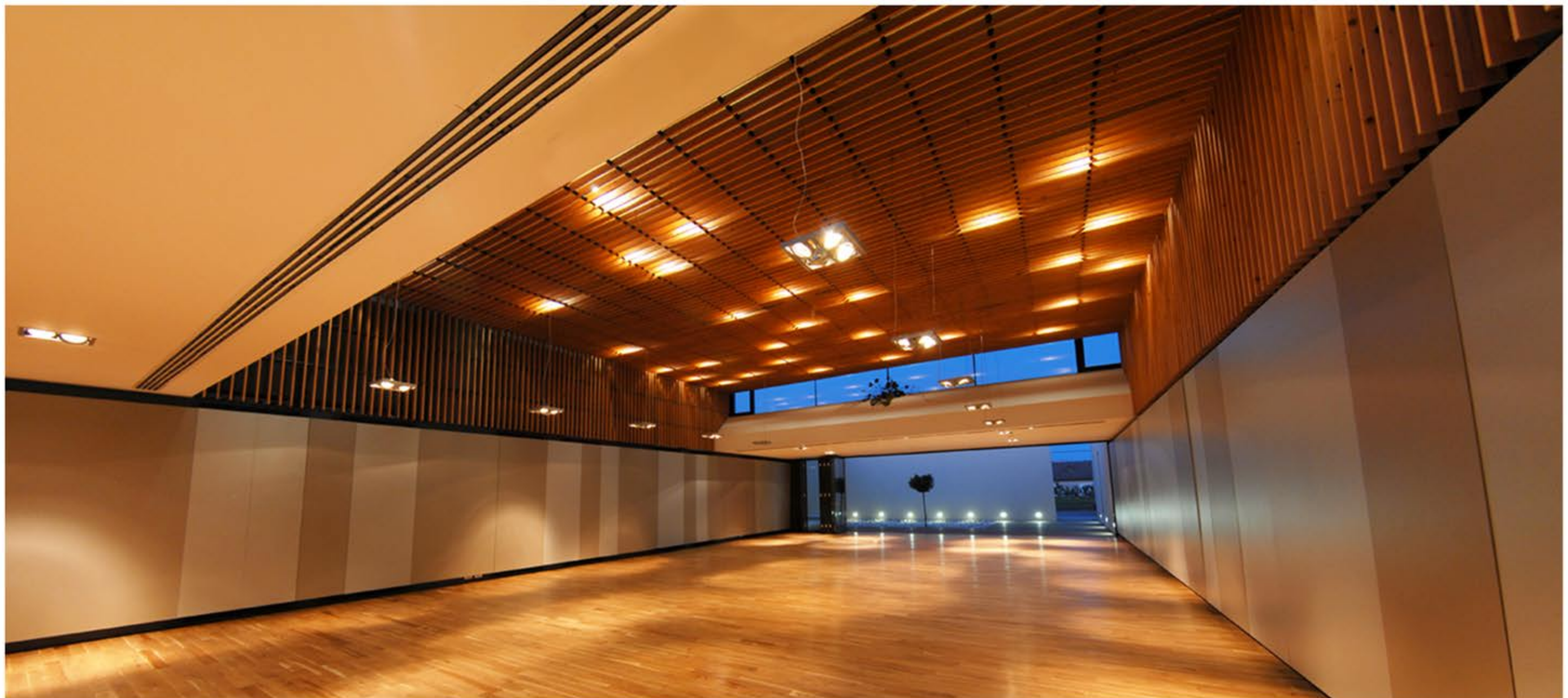




## composition & materials

The friendly scale of the spaces is completed by the “temperature” of the materials that were chosen: the exotic wood in the intermediary spaces, the wooden parquet and the wooden ceiling from the multifunctional space, the wood confection forming screens meant to protect and to define more clearly the balconies as exterior rooms. Stone on the exterior, big sandstone slabs in the hall and the reception area. The stone on the floor and on the east wall of the chapel becomes a “precious textile” that vibrates in the morning light (on the floor) and dawn (on the altar wall).

■ GROUND FLOOR PLAN







# GALERIA 1

Timisoara, Romania

---

Architect:

**Ioan Andreescu**

Year:

**2005**

Collaborators:

**Dan Munteanu**

The place and theme – a disused industrial site, not far from the historic center of Timisoara, across a major thoroughfare from the north. The large site was gradually converted to commercial use through sham conversions, typical for the 1990s, of the existing halls.





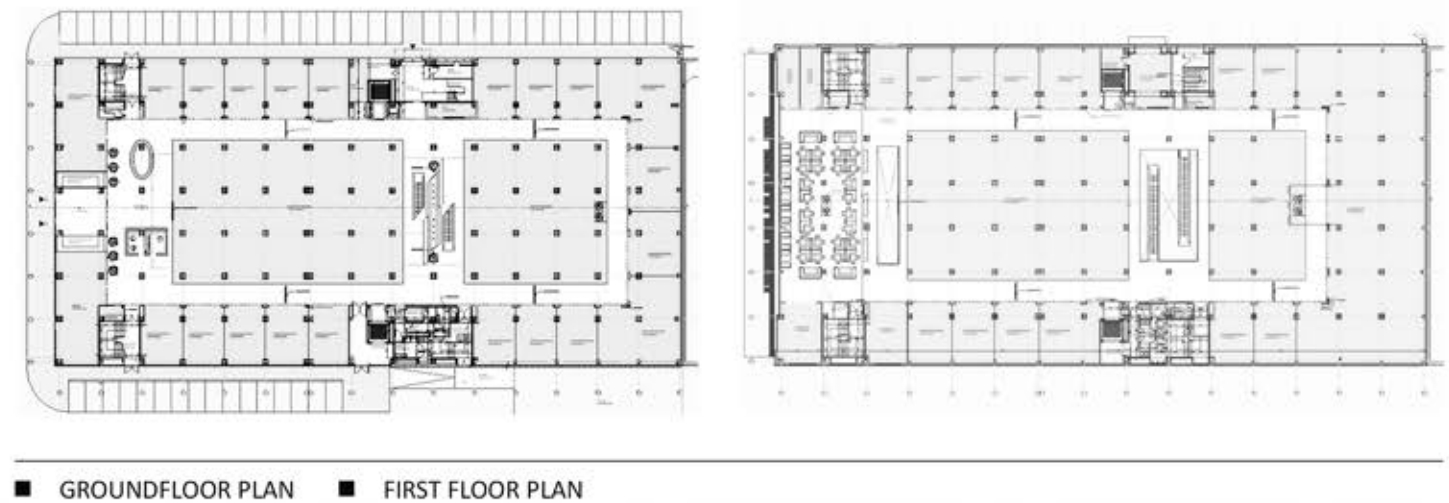




# description

The appearance of the «Iulius Mall» (architect Radu Mihailescu) determined the investors, owners of the industrial site, to convert the main hall into a commercial center, of special kind in Romania: a «design center» with a view to the center; that was supposed to offer ample show-room areas, perfectly equipped to exhibit furniture, decorations, design products reflecting the recent real estate boom.

The hall – initially meant for processing meat, offered 5,000 sqm on each storey. The uniform reinforced structure of 6x6 m – done in the 1970s – was severely damaged during a fire and due to the industrial processes it sheltered. The upper floor was compartmentalized so as the «cells» produced split-levels of 40 cm.







## the bar code and night-lights

The lateral closures, pierced by numerous installations, were draped by a secondary façade of white-blue polycarbonate strips, graphically organized as an immense bar code – graphical symbol of commerce. The front façade – one that ensures the access – is «draped» in a huge red and black metal structure, shaped like a gigantic «Z» whose lower side makes the canopy above the entrance. The luminous letters of the logo «drift» on a large double net painted in matte black. By night, the entire ensemble turns into a big Japanese lampion, with the white-blue panels lit from behind and red letters floating like some self-contained hieroglyphs against the nocturnal sky, while their matte background dissolves in the dark.







# BADEA CARTAN MARKET

Timisoara, Romania

---

Architect:

**Vlad Gaivoronschi**  
**Ioan Andreescu**  
**Adrian Ionasiu**

Year:

**1996**

Collaborators:

**Dan Munteanu, Alexandru**  
**Malaescu, Ovidiu Micsa,**  
**Vlad Meglei**







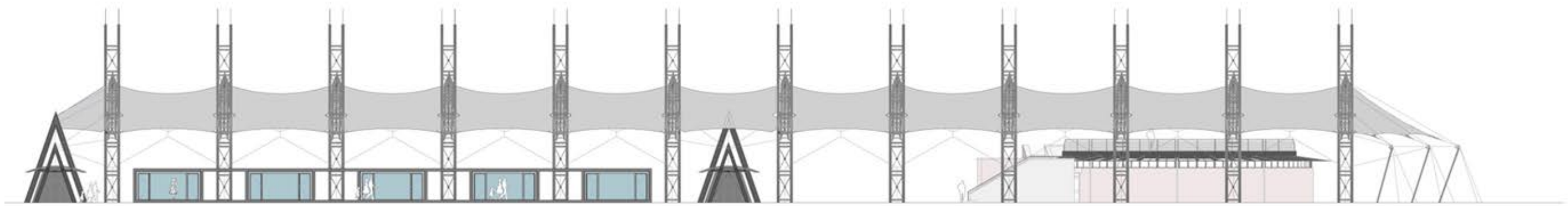




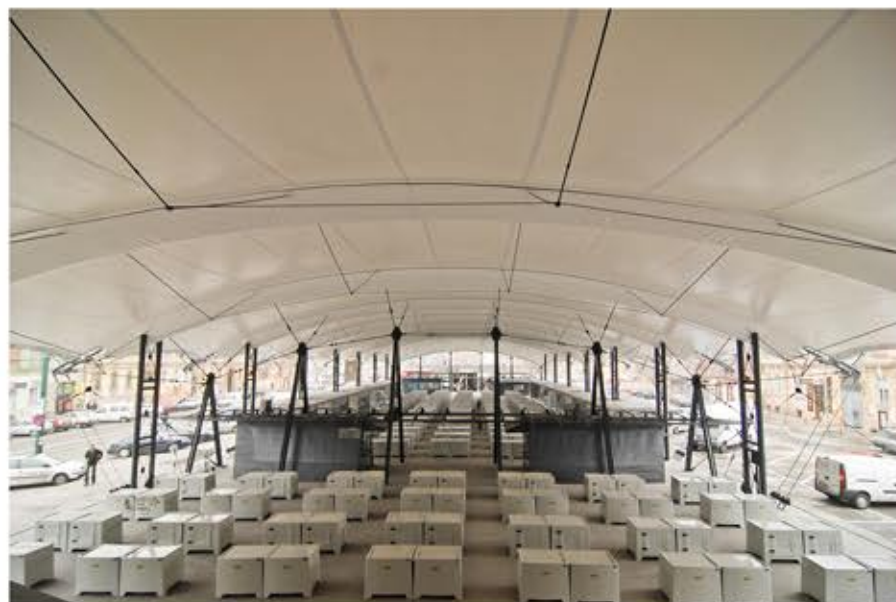
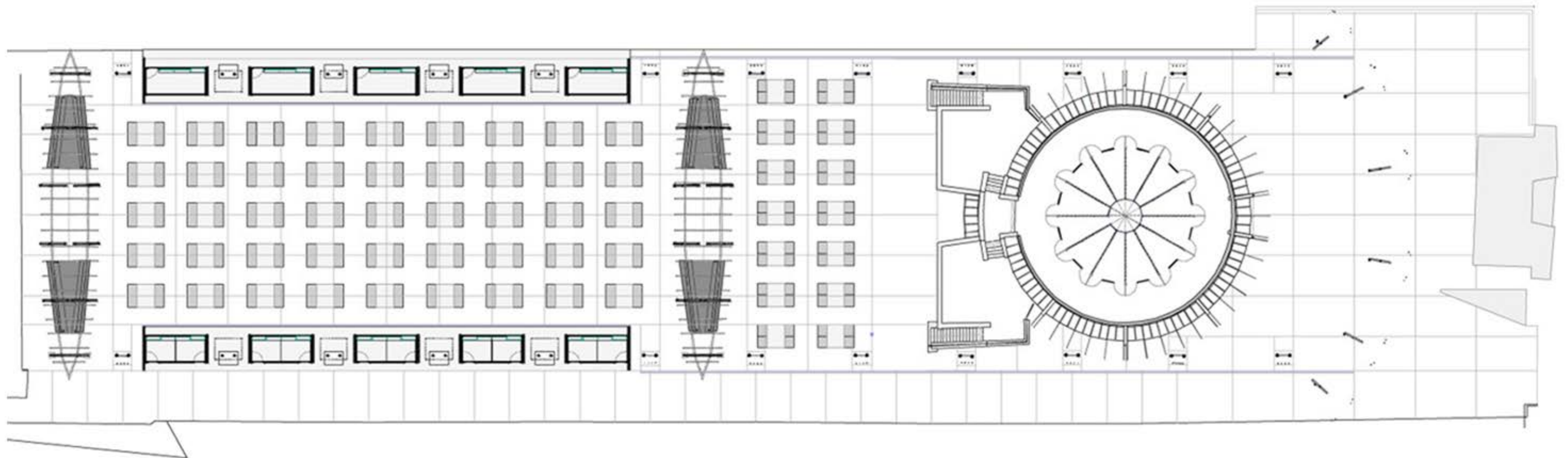








PARCARE AUTO





# ISHO MIXED-USE

RESIDENTIAL - OFFICE - HOTEL

Timisoara, Romania

ISHO project is regenerating a brownfield land situated in an intermediate area, developing an "urban landscape" perspective, managing to attribute to the interventions a connecting role between the existing landmarks and poles; an important role was given to the "modelling" of the volumes in order to open vistas and visual cones, as well as to the choice of forms and textures in order to "stitch" the existing fabric and to offer a new reading of the city.

Architect:

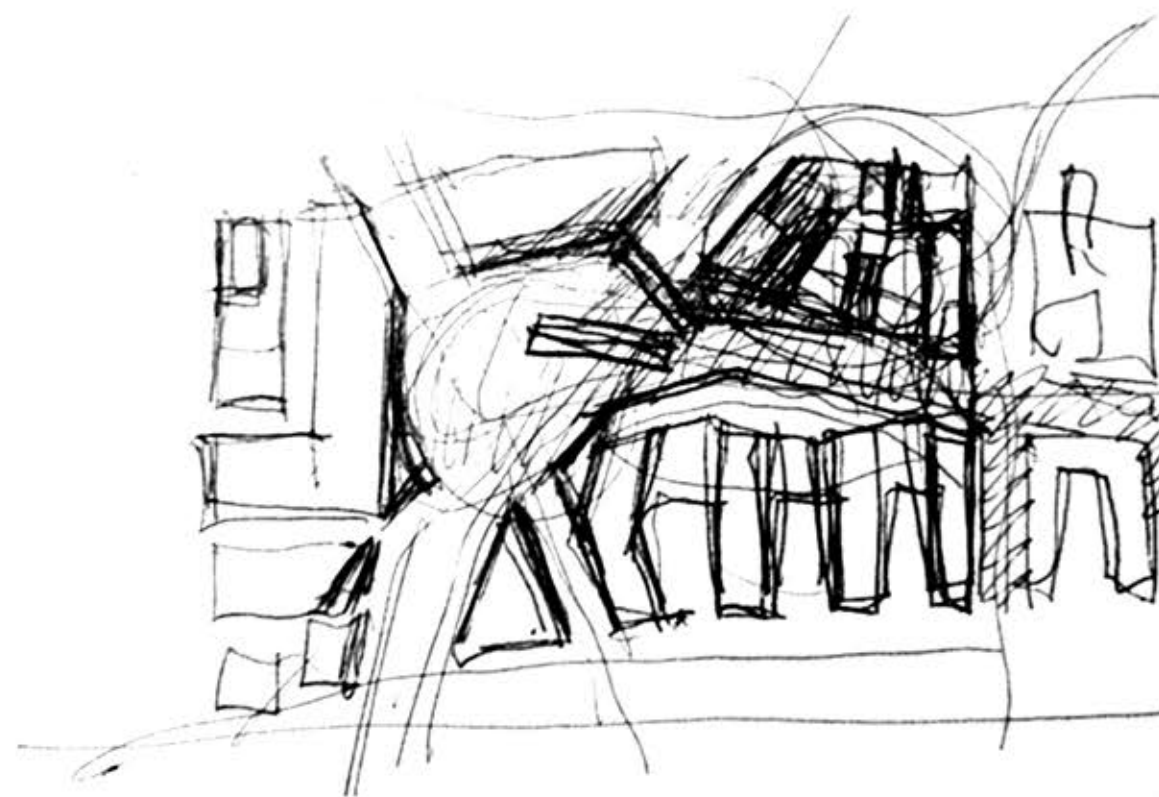
**Vlad Gaivoronschi**  
**Ioan Andreescu**

Year:

**2017**

Collaborators:

**Simina Cuc, Cătălin Gavrilescu,**  
**Mihai Danciu, Ovidiu Micșa,**  
**Monica Mănase, Daniel Muntean,**  
**Vlad Meglei, Răzvan Dinu, Sigrid**  
**Hauler, Patricia Murar**





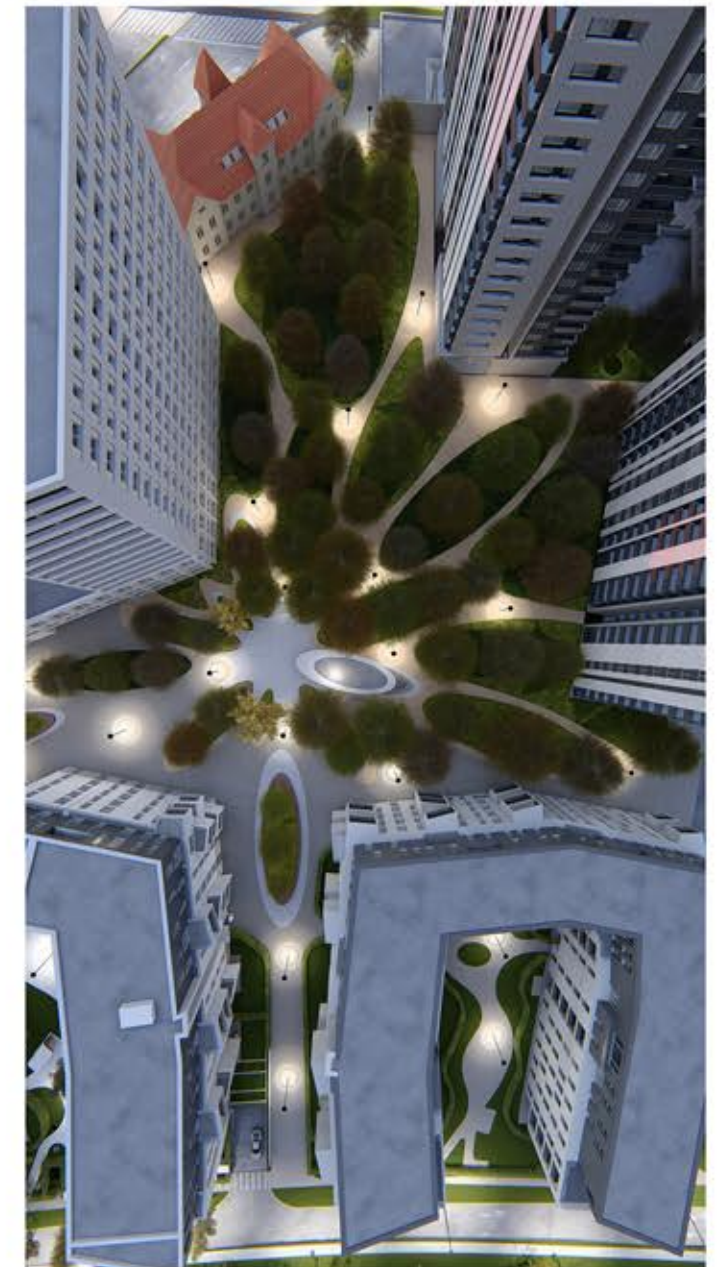




# description

In the East side of the city, on the site of a large textile factory called ILSA – The Wool Industry, between the main boulevard entering the city centre from East and the Bega Channel, a new development, called ISHO, has started. It is a complex mix of functions, a hub of multiple connections which will accommodate:

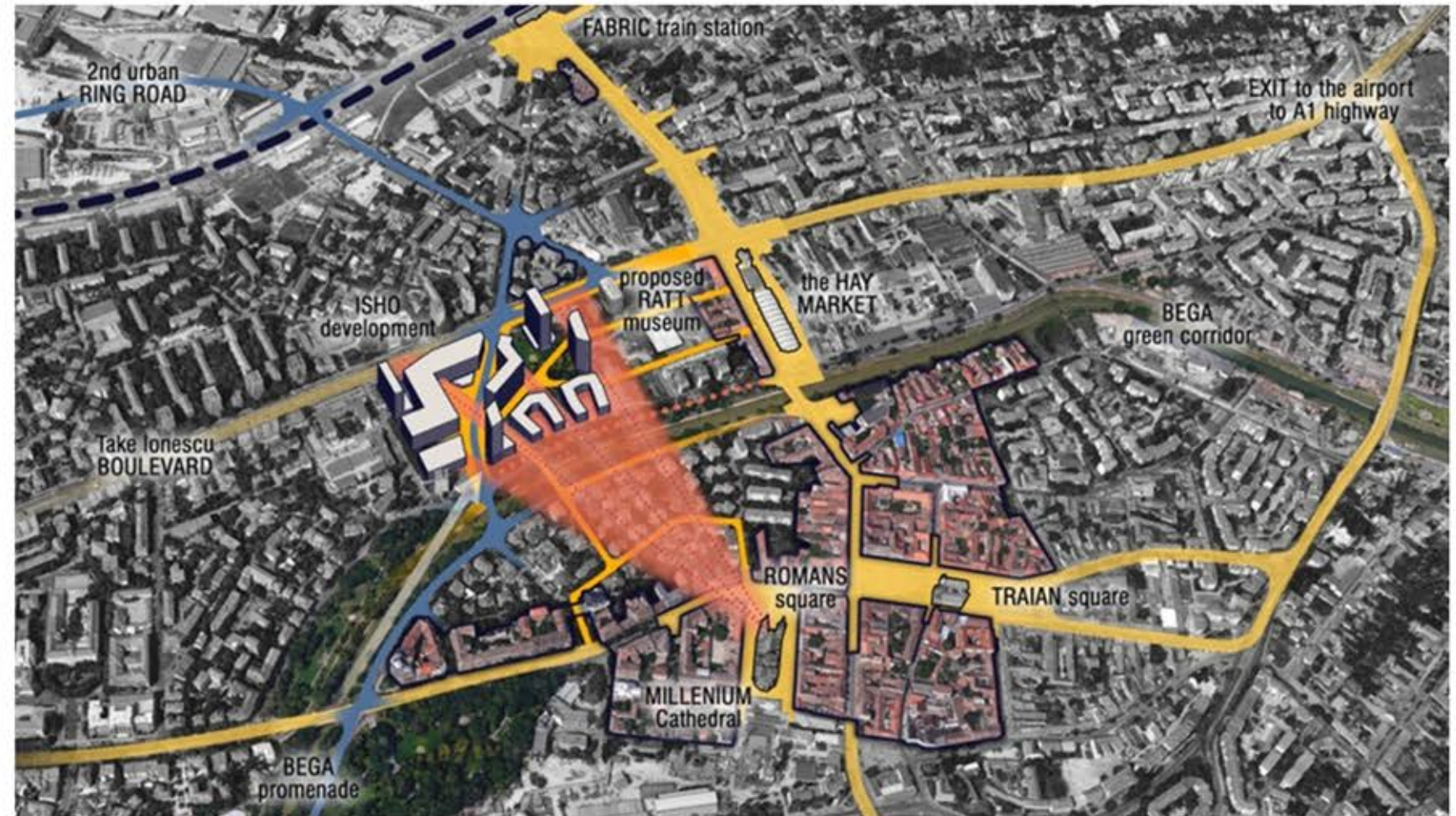
- a segment of the second ring of the city together with a new strategic bridge over Bega.
- a second pedestrian bridge which will continue an important pedestrian road connecting ISHO with another historic district in the east of the city with a powerful NW-SE visual direction, pointed to the massive Millenium church, a landmark in one of the historic plazas of the old Fabric district;
- the ample exposure to the riverfront;
- an eastern-western connection, through an old tramway remise (to be converted into a Transport Museum and Cultural Centre).





# main strategy

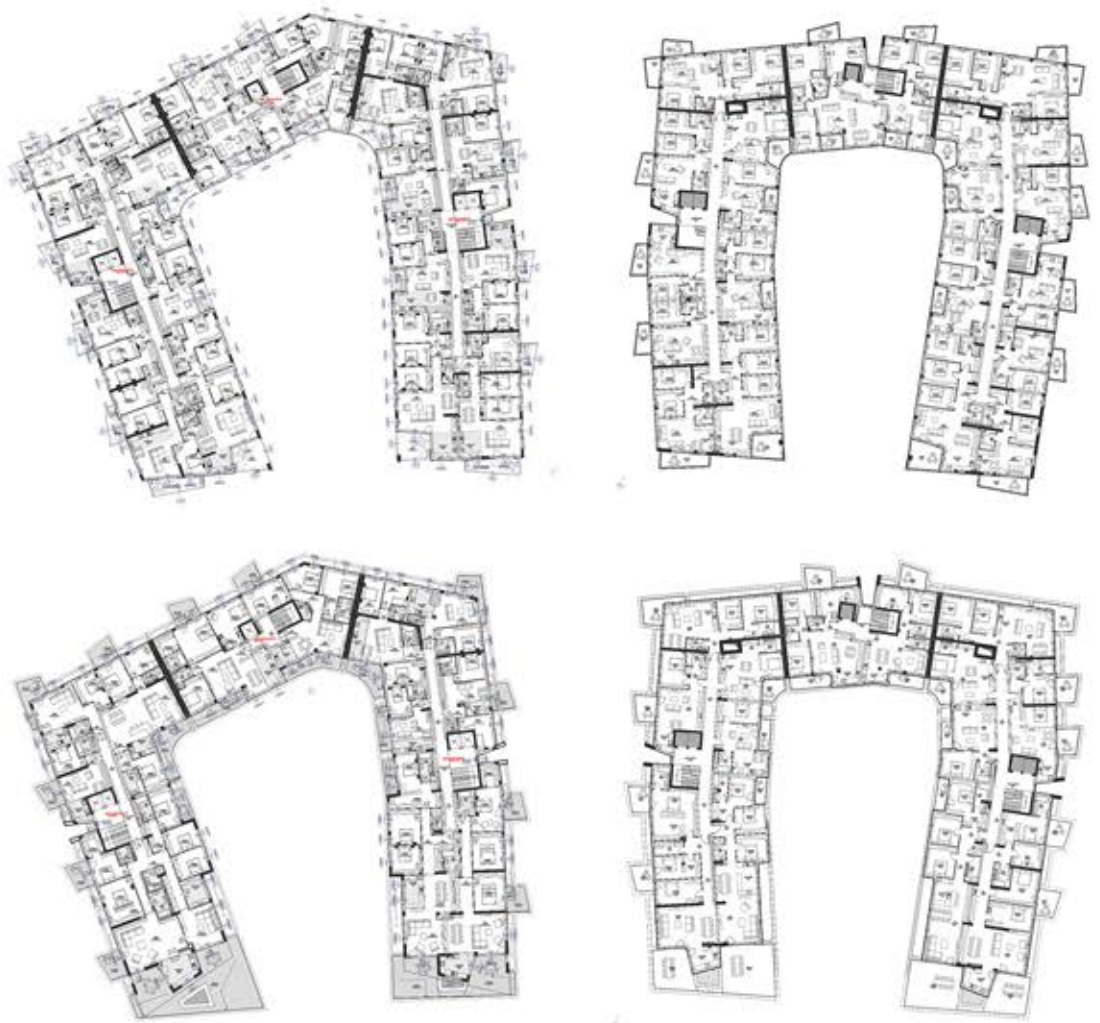
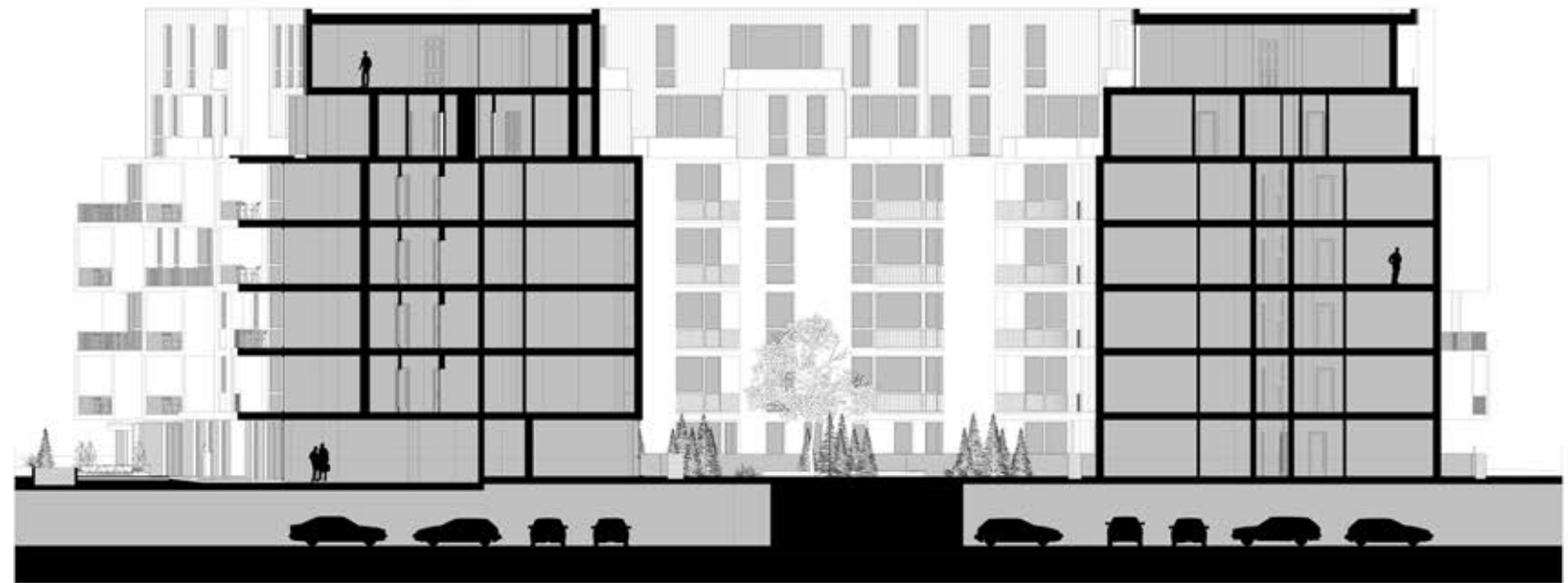
The management of the complex knot of fluxes, connections, thoroughfares, viewing directions and panoramas, influenced the planning strategy, the architectural design, the inner landscaping. The main strategy was to divide the site into three east-west strips—along the boulevard, along the riverbank and in-between along the future eastern connection. The northern strip will contain massive and iconic buildings (offices, hotels, high-rise apartments), consistent with enhancing the boulevard image as a thoroughfare. The southern edge will contain several U-shaped apartment buildings and a high-rise, offering an iconic tower. The middle strip contains an inner plaza, defined by the S shaped office building and a green square between the northern and southern rows of buildings. The design of the public spaces with a unique parametric landscaped pattern varies from mineral until green, from public plaza or green square to semi-private inner atriums of the U-shaped buildings.











■ APARTMENT BUILDINGS PLANS & SECTION





■ APARTMENT TYPOLOGY & INTERIOR DESIGN







Sf. Gheorghe Square, No. 4, Ap. 10  
300 085 - Timisoara, Romania

T: 0040-256-606042 ..43  
F: 0040-256-430093

andregaivo@gmail.com  
contact@andreescu-gaivoronski.com

[www.andreescu-gaivoronski.com](http://www.andreescu-gaivoronski.com)

# ANDREESCU & GAIVORONSKI

---

P O R T F O L I O